

HIPK2 Rabbit mAb

货号: **AYM31340**

产品信息

反应	Human,Mouse
宿主	Rabbit
克隆性	Monoclonal
预测反应	
应用	WB IF/ICC IP FC
推荐浓度	WB: 1:500 - 1:2000 IF/ICC: 1:50 - 1:200 IP: 1:20 - 1:50 FC: 1:20 - 1:50
理论分子量	130/100kDa
实测分子量	130/100kDa
形式	Liquid
保存条件	Store at -20°C. Avoid freeze / thaw cycles. Buffer: PBS with 0.75% BSA,50% glycerol,pH7.3.
偶联物	Unconjugated
阳性对照	RD,Raji
细胞定位	Cytoplasm,Nucleus,PML body
纯化	Affinity purification

抗原信息

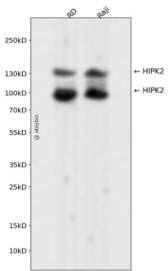
抗原信息	Recombinant fusion protein corresponding to Human HIPK2.
序列	STSVTGQVLGGPHNLMRRSTVSLLDTYQKCGLKRKSEEIENTSSVQIIIEHPPMIQNNASGATVATATTSTATSKNSGSNS EGDYQLVQHEVLCSMTNTYE

靶点信息

研究背景	This gene encodes a conserved serine/threonine kinase that is a member of the homeodomain-interacting protein kinase family. The encoded protein interacts with homeodomain transcription factors and many other transcription factors such as p53, and can function as both a corepressor and a coactivator depending on the transcription factor and its subcellular localization. Multiple transcript variants encoding different isoforms have been found for this gene. [provided by RefSeq, Nov 2011]
------	---

基因ID	28996
基因名	HIPK2
Swiss	Q9H2X6
别名	PRO0593

产品验证



Western blot analysis of HIPK2 expressed in RD,Raji using HIPK2 Rabbit mAb at 1:1000. Secondary antibody: HRP Goat Anti-Rabbit IgG (H+L) at 1:5000. Lysates/proteins: 30ug per lane. Blocking buffer: 5% non-fat dry milk in TBST. Detection: ECL Enhanced Kit. Exposure time: 120s.

实验步骤

访问官网浏览详情: www.ablybio.cn