

SMC3 Rabbit mAb

货号: **AYM31333**

产品信息

反应	Human,Mouse,Rat
宿主	Rabbit
克隆性	Monoclonal
预测反应	
应用	WB IHC IF/ICC FC
推荐浓度	WB: 1:500 - 1:2000 IHC: 1:50 - 1:200 IF/ICC: 1:50 - 1:200 FC: 1:20 - 1:50
理论分子量	141kDa
实测分子量	141kDa
形式	Liquid
保存条件	Store at -20°C. Avoid freeze / thaw cycles. Buffer: PBS with 0.75% BSA,50% glycerol,pH7.3.
偶联物	Unconjugated
阳性对照	U-87MG,Jurkat,HeLa,Mouse testis,Mouse spleen
细胞定位	cytosol,mitotic spindle pole,nuclear matrix,nucleoplasm,nucleus
纯化	Affinity purification

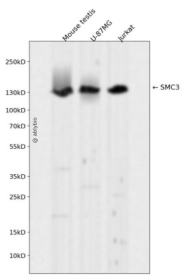
抗原信息

抗原信息	Recombinant fusion protein corresponding to Human SMC3.
序列	KEHMDAINHDTKELEKMTNRQGMLLKKKEECMKKIRELGSLPQEA FEKYQTL SLKQLFRKLEQCNTTELKKYSHVNKKALDQ FVNFSEQKEKLIKQEELDRGYKSIMELMNVLELRKYEAIQLTFKQVSKNFSEVFQKLVPGGKATLVMKKGDVEGSQSQDE GEGSGESERGSQSQSSVPSVDQFTGVGIRVSFTGKQGE MREMQLSGGQKSLVALALIFAIQKCDPAPFYLFDEIDQALD AQHRKAVSDMIMELAVHAQFITTTFRPELLESADKFYGVKFRNKVSHID

靶点信息

研究背景	This gene belongs to the SMC3 subfamily of SMC proteins. The encoded protein occurs in certain cell types as either an intracellular, nuclear protein or a secreted protein. The nuclear form, known as structural maintenance of chromosomes 3, is a component of the multimeric cohesin complex that holds together sister chromatids during mitosis, enabling proper chromosome segregation. Post-translational modification of the encoded protein by the addition of chondroitin sulfate chains gives rise to the secreted proteoglycan bamacan, an abundant basement membrane protein.
基因ID	9126
基因名	SMC3
Swiss	Q9UQE7
别名	BAM;BMH;CDLS3;CSPG6;HCAP;SMC3L1;SMC3

产品验证



Western blot analysis of SMC3 expressed in Mouse testis,U-87MG,Jurkat using SMC3 Rabbit mAb at 1:1000. Secondary antibody: HRP Goat Anti-Rabbit IgG (H+L) at 1:5000. Lysates/proteins: 30ug per lane. Blocking buffer: 5% non-fat dry milk in TBST. Detection: ECL Enhanced Kit. Exposure time: 120s.

实验步骤

访问官网浏览详情: www.ablybio.cn