

# Angiotensinogen Rabbit mAb

货号: **AYM31329**

## 产品信息

反应	Human
宿主	Rabbit
克隆性	Monoclonal
预测反应	
应用	WB IF/ICC IP
推荐浓度	<b>WB:</b> 1:500 - 1:2000 <b>IF/ICC:</b> 1:50 - 1:200 <b>IP:</b> 1:20 - 1:50
理论分子量	53kDa
实测分子量	53kDa
形式	Liquid
保存条件	Store at -20°C. Avoid freeze / thaw cycles. Buffer: PBS with 0.75% BSA,50% glycerol,pH7.3.
偶联物	Unconjugated
阳性对照	Human plasma,Mouse plasma
细胞定位	Secreted
纯化	Affinity purification

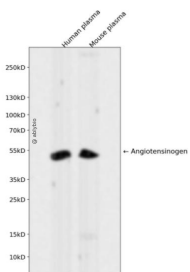
## 抗原信息

抗原信息	Recombinant fusion protein corresponding to Human Angiotensinogen.
序列	RVYIHPFHLVIHNESTCEQLAKANAGPKDPTFIPAPIQAKTSPVDEKALQDQLVLAALKDTEDKLRAAMVGMLANFLGFR IYGMHSELWGVVHGATVLSPTAVFGTLASLYLGALDHTADRLQAILGVPWKDKNCTSRDLAHKVLQAVQGLLVAQG RADSQAQLLLSTVVGVTAPGLHLKQPFVQGLALYTPVVLPRSLDFTELDVAAEKIDRFMQAVTGWKTGCSLMGASVDST LAFNTYVHFQ

## 靶点信息

研究背景	The protein encoded by this gene, pre-angiotensinogen or angiotensinogen precursor, is expressed in the liver and is cleaved by the enzyme renin in response to lowered blood pressure. The resulting product, angiotensin I, is then cleaved by angiotensin converting enzyme (ACE) to generate the physiologically active enzyme angiotensin II. The protein is involved in maintaining blood pressure and in the pathogenesis of essential hypertension and preeclampsia. Mutations in this gene are associated with susceptibility to essential hypertension, and can cause renal tubular dysgenesis, a severe disorder of renal tubular development. Defects in this gene have also been associated with non-familial structural atrial fibrillation, and inflammatory bowel disease.
基因ID	183
基因名	AGT
Swiss	P01019
别名	AGT;ANHU;hFLT1

## 产品验证



Western blot analysis of Angiotensinogen expressed in Human plasma, Mouse plasma using Angiotensinogen Rabbit mAb at 1:1000. Secondary antibody: HRP Goat Anti-Rabbit IgG (H+L) at 1:5000. Lysates/proteins: 30ug per lane. Blocking buffer: 5% non-fat dry milk in TBST. Detection: ECL Enhanced Kit. Exposure time: 120s.

## 实验步骤

访问官网浏览详情: [www.ablybio.cn](http://www.ablybio.cn)