

POLR2C Rabbit mAb

货号: **AYM31325**

产品信息

反应	Human,Mouse,Rat
宿主	Rabbit
克隆性	Monoclonal
预测反应	
应用	WB IHC
推荐浓度	WB: 1:500 - 1:2000 IHC: 1:50 - 1:200
理论分子量	33kDa
实测分子量	33kDa
形式	Liquid
保存条件	Store at -20°C. Avoid freeze / thaw cycles. Buffer: PBS with 0.75% BSA,50% glycerol,pH7.3.
偶联物	Unconjugated
阳性对照	293T,Mouse kidney,Rat lung,Rat brain,Rat spleen
细胞定位	cytosol,nucleoplasm,nucleus
纯化	Affinity purification

抗原信息

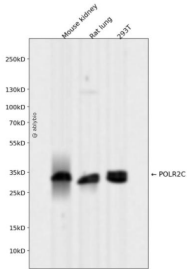
抗原信息	Recombinant fusion protein corresponding to Human POLR2C.
序列	MPYANQPTVRITELTDENVKFIIENTDLAVANSIRRVFIAEVPIIAIDWVQIDANSSVLHDEFIAHRLGLIPLISDDIVDKLQYSR DCTCEEFCECSVE

靶点信息

研究背景	This gene encodes the third largest subunit of RNA polymerase II, the polymerase responsible for synthesizing messenger RNA in eukaryotes. The product of this gene contains a cysteine rich region and exists as a heterodimer with another polymerase subunit, POLR2]. These two subunits form a core subassembly unit of the polymerase. A pseudogene has been identified on chromosome 21. [provided by RefSeq, Jul 20 08]
基因ID	5432

基因名	POLR2C
Swiss	P19387
别名	RPB3; RPB31; hRPB33; hsRPB3

产品验证



Western blot analysis of POLR2C expressed in Mouse kidney,Rat lung,293T using POLR2C Rabbit mAb at 1:1000. Secondary antibody: HRP Goat Anti-Rabbit IgG (H+L) at 1:5000. Lysates/proteins: 30ug per lane. Blocking buffer: 5% non-fat dry milk in TBST. Detection: ECL Enhanced Kit. Exposure time: 120s.

实验步骤

访问官网浏览详情: www.ablybio.cn