

# Neutrophil Elastase Rabbit mAb

货号: **AYM31313**

## 产品信息

|       |  |
|-------|--|
| 反应    | Human  |
| 宿主    | Rabbit   |
| 克隆性   | Monoclonal   |
| 预测反应  |  |
| 应用    | WB IHC IF/ICC FC   |
| 推荐浓度  | <b>WB:</b> 1:500 - 1:2000<br><b>IHC:</b> 1:50 - 1:200<br><b>IF/ICC:</b> 1:50 - 1:200<br><b>FC:</b> 1:20 - 1:50         |
| 理论分子量 | 28kDa  |
| 实测分子量 | 29kDa  |
| 形式    | Liquid   |
| 保存条件  | Store at -20°C. Avoid freeze / thaw cycles.<br>Buffer: PBS with 0.75% BSA, 50% glycerol, pH7.3.                        |
| 偶联物   | Unconjugated   |
| 阳性对照  | Rat spleen   |
| 细胞定位  | cell surface, cytoplasm, cytosol, extracellular exosome, extracellular region, extracellular space, phagocytic vesicle |
| 纯化    | Affinity purification  |

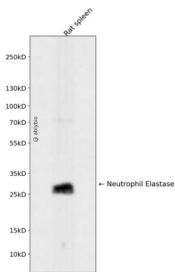
## 抗原信息

|      |  |
|------|--|
| 抗原信息 | Recombinant fusion protein corresponding to Human Neutrophil Elastase.                                     |
| 序列   | VLQELNVTVVTSLCRRSNVCTLVRGRQAGVCFGDSGSP LVCNGLIHG IASFVRGGCASGLYPDAFAPVAQFVNWIDSIIQR<br>SEDNPCPHRPDPDPASRTH |

## 靶点信息

|       |  |
|-------|--|
| 研究背景  | Elastases form a subfamily of serine proteases that hydrolyze many proteins in addition to elastin. Humans have six elastase genes which encode structurally similar proteins. The encoded preproprotein is proteolytically processed to generate the active protease. Following activation, this protease hydrolyzes proteins within specialized neutrophil lysosomes, called azurophil granules, as well as proteins of the extracellular matrix. The enzyme may play a role in degenerative and inflammatory diseases through proteolysis of collagen-IV and elastin. This protein also degrades the outer membrane protein A (OmpA) of <i>E. coli</i> as well as the virulence factors of such bacteria as <i>Shigella</i> , <i>Salmonella</i> and <i>Yersinia</i> . Mutations in this gene are associated with cyclic neutropenia and severe congenital neutropenia (SCN). This gene is present in a gene cluster on chromosome 19. |
| 基因ID  | 1991   |
| 基因名   | ELANE  |
| Swiss | P08246   |
| 别名    | ELANE;ELA2;GE;HLE;HNE;NE;PMN-E;SCN1  |

## 产品验证



Western blot analysis of Neutrophil Elastase expressed in Rat spleen using Neutrophil Elastase Rabbit m Ab at 1:1000. Secondary antibody: HRP Goat Anti-Rabbit IgG (H+L) at 1:5000. Lysates/proteins: 30ug per lane. Blocking buffer: 5% non-fat dry milk in TBST. Detection: ECL Enhanced Kit. Exposure time: 120s.

## 实验步骤

访问官网浏览详情: [www.ablybio.cn](http://www.ablybio.cn)