

C4D Rabbit mAb

货号: **AYM31308**

产品信息

反应	Human
宿主	Rabbit
克隆性	Monoclonal
预测反应	
应用	WB IHC FC
推荐浓度	WB: 1:500 - 1:2000 IHC: 1:50 - 1:200 FC: 1:20 - 1:50
理论分子量	193kDa
实测分子量	193kDa
形式	Liquid
保存条件	Store at -20°C. Avoid freeze / thaw cycles. Buffer: PBS with 0.75% BSA,50% glycerol,pH7.3.
偶联物	Unconjugated
阳性对照	HepG2
细胞定位	axon,blood microparticle,classical-complement-pathway C3/C5 convertase complex,dendrite,endoplasmic reticulum lumen,extracellular exosome,extracellular region,extracellular space,plasma membrane,synapse
纯化	Affinity purification

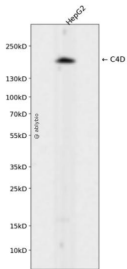
抗原信息

抗原信息	Recombinant fusion protein corresponding to Human C4D.
序列	HREELVYELNPLDHRGRTLEIPGNSDPNMIPDGFNSYVRVTASDPLDTLGSEGALSPGGVASLLRLPRGCGEQTMIYLAP TLAASRYLDKTEQWSTLPPETKDHAVDLIQGYMRIQQFRKADGSYAAWLSRDSSTWLTAFVLKVLSLAQEQVGGSP LQETSNWLLSQQADGSFQDPCPVLDRSMQGGLVGNDETVALTAFVTIALHHGLAVFQDEGAEPLKQRVEASISKANSF LGEKASAGLLGAHAAITAYALTTLKAPVDLLGVAHNNLMAMAQETGDNLWGSVTGSQ

靶点信息

研究背景	This gene encodes the acidic form of complement factor 4, part of the classical activation pathway. The protein is expressed as a single chain precursor which is proteolytically cleaved into a trimer of alpha, beta, and gamma chains prior to secretion. The trimer provides a surface for interaction between the antigen-antibody complex and other complement components. The alpha chain is cleaved to release C4 anaphylatoxin, an antimicrobial peptide and a mediator of local inflammation. Deficiency of this protein is associated with systemic lupus erythematosus and type I diabetes mellitus. This gene localizes to the major histocompatibility complex (MHC) class III region on chromosome 6. Varying haplotypes of this gene cluster exist, such that individuals may have 1, 2, or 3 copies of this gene. Two transcript variants encoding different isoforms have been found for this gene. [provided by RefSeq, Nov 2014]
基因ID	720
基因名	
Swiss	POC0L4
别名	C4; C4A2; C4A3; C4A4; C4A6; C4AD; C4S; C04; CPAMD2; RG

产品验证



Western blot analysis of C4D expressed in HepG2 using C4D Rabbit mAb at 1:1000. Secondary antibody: HRP Goat Anti-Rabbit IgG (H+L) at 1:5000. Lysates/proteins: 30ug per lane. Blocking buffer: 5% non-fat dry milk in TBST. Detection: ECL Enhanced Kit. Exposure time: 120s.

实验步骤

访问官网浏览详情: www.ablybio.cn