

CD48 Rabbit mAb

货号: **AYM31300**

产品信息

反应	Human
宿主	Rabbit
克隆性	Monoclonal
预测反应	
应用	WB IHC IF/ICC IP
推荐浓度	WB: 1:500 - 1:2000 IHC: 1:50 - 1:200 IF/ICC: 1:50 - 1:200 IP: 1:20 - 1:50
理论分子量	19kDa/27kDa
实测分子量	43kDa
形式	Liquid
保存条件	Store at -20°C. Avoid freeze / thaw cycles. Buffer: PBS with 0.75% BSA,50% glycerol,pH7.3.
偶联物	Unconjugated
阳性对照	Mouse pancreas,Mouse spleen,Rat pancreas
细胞定位	Cell membrane,GPI-anchor,Lipid-anchor
纯化	Affinity purification

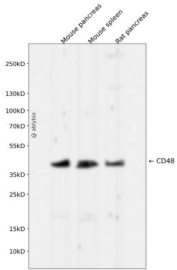
抗原信息

抗原信息	Recombinant fusion protein corresponding to Human CD48.
序列	ISESLPENYKQLTWFYTFDQKIVEWDSRKSIFYESKFKGRVRLDPQSGALYISKVQKEDNSTYIMRVLKKTGNEQEWKIKLQVLDPVPKPKVIEKIEDMDDNCYLKLSVIPGESVNYTWYGDKRPFKELQNSVLETTLMPHNYSRCYTCQVSNVSSKN GTVC

靶点信息

研究背景	This gene encodes a member of the CD2 subfamily of immunoglobulin-like receptors which includes SLAM (signaling lymphocyte activation molecules) proteins. The encoded protein is found on the surface of lymphocytes and other immune cells, dendritic cells and endothelial cells, and participates in activation and differentiation pathways in these cells. The encoded protein does not have a transmembrane domain, however, but is held at the cell surface by a GPI anchor via a C-terminal domain which maybe cleaved to yield a soluble form of the receptor. Multiple transcript variants encoding different isoforms have been found for this gene.
基因ID	962
基因名	CD48
Swiss	P09326
别名	CD48;BCM1;BLAST;BLAST1;MEM-102;SLAMF2;hCD48;mCD48

产品验证



Western blot analysis of CD48 expressed in Mouse pancreas, Mouse spleen, Rat pancreas using CD48 Rabbit mAb at 1:1000. Secondary antibody: HRP Goat Anti-Rabbit IgG (H+L) at 1:5000. Lysates/proteins: 30ug per lane. Blocking buffer: 5% non-fat dry milk in TBST. Detection: ECL Enhanced Kit. Exposure time: 120s.

实验步骤

访问官网浏览详情: www.ablybio.cn