

Src Rabbit mAb

货号: **AYM31295**

产品信息

反应	Human,Mouse,Rat
宿主	Rabbit
克隆性	Monoclonal
预测反应	
应用	WB IHC IF/ICC FC
推荐浓度	WB: 1:500 - 1:2000 IHC: 1:50 - 1:200 IF/ICC: 1:50 - 1:200 FC: 1:20 - 1:50
理论分子量	59kDa/60kDa
实测分子量	60kDa
形式	Liquid
保存条件	Store at -20°C. Avoid freeze / thaw cycles. Buffer: PBS with 0.75% BSA,50% glycerol,pH7.3.
偶联物	Unconjugated
阳性对照	SH-SY5Y
细胞定位	Cell membrane,Cytoplasm,Mitochondrion inner membrane,Nucleus,cytoskeleton
纯化	Affinity purification

抗原信息

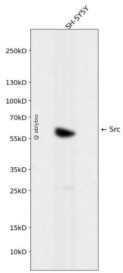
抗原信息	Recombinant fusion protein corresponding to Human Src.
序列	LARLIEDNEYTARQGAKFPIKWTAPEAAALYGRFTIKSDVWSFGILLTELTTKGRVPYPGMVNREVLQDQVERGYRMPCPPECP ESLHDLMCQCWRKEPEERPTFEYLQAFLEDYFTSTEPQYQGENL

靶点信息

研究背景	This gene is highly similar to the v-src gene of Rous sarcoma virus. This proto-oncogene may play a role in the regulation of embryonic development and cell growth. The protein encoded by this gene is a tyrosine protein kinase whose activity can be inhibited by phosphorylation by c-SRC kinase. Mutations in this gene could be involved in the malignant progression of colon cancer. Two transcript variants encoding the same protein have been found for this gene.
------	--

基因ID	6714
基因名	SRC
Swiss	P12931
别名	ASV;SRC1;THC6;c-SRC;p60-Src;SRC

产品验证



Western blot analysis of Src expressed in SH-SY5Y using Src Rabbit mAb at 1:1000. Secondary antibody: HRP Goat Anti-Rabbit IgG (H+L) at 1:5000. Lysates/proteins: 30ug per lane. Blocking buffer: 5% non-fat dry milk in TBST. Detection: ECL Enhanced Kit. Exposure time: 120s.

实验步骤

访问官网浏览详情: www.ablybio.cn