

RGMA Rabbit mAb

货号: **AYM31290**

产品信息

反应	Human,Mouse,Rat
宿主	Rabbit
克隆性	Monoclonal
预测反应	
应用	WB IF/ICC
推荐浓度	WB: 1:500 - 1:2000 IF/ICC: 1:50 - 1:200
理论分子量	37kDa
实测分子量	37kDa
形式	Liquid
保存条件	Store at -20°C. Avoid freeze / thaw cycles. Buffer: PBS with 0.75% BSA,50% glycerol,pH7.3.
偶联物	Unconjugated
阳性对照	Mouse heart,Rat skeletal muscle, Rat heart
细胞定位	Cell membrane,GPI-anchor,Lipid-anchor
纯化	Affinity purification

抗原信息

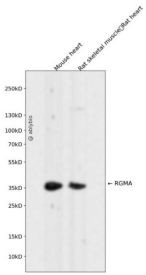
抗原信息	Recombinant fusion protein corresponding to Human RGMA.
序列	TAPETFPYETAVAKCKEKLPEVDLYYQACVFDLLTTGDVNFTLAAYYALEVDKMLHSNKDKLHLYERTRDLPGRAAAGLPLA PRPLLGALVPLLALLPVFC

靶点信息

研究背景	This gene encodes a member of the repulsive guidance molecule family. The encoded protein is a glycosylphosphatidylinositol-anchored glycoprotein that functions as an axon guidance protein in the developing and adult central nervous system. This protein may also function as a tumor suppressor in some cancers. Alternate splicing results in multiple transcript variants.
基因ID	56963

基因名	RGMA
Swiss	Q96B86
别名	RGMA; RGM; repulsive guidance molecule A

产品验证



Western blot analysis of RGMA expressed in Mouse heart, Rat skeletal muscle, Rat heart using RGMA Rabbit mAb at 1:1000. Secondary antibody: HRP Goat Anti-Rabbit IgG (H+L) at 1:5000. Lysates/proteins: 30ug per lane. Blocking buffer: 5% non-fat dry milk in TBST. Detection: ECL Enhanced Kit. Exposure time: 120 S.

实验步骤

访问官网浏览详情: www.ablybio.cn