

# CLIC4 Rabbit mAb

货号: **AYM31287**

## 产品信息

反应	Human,Mouse,Rat
宿主	Rabbit
克隆性	Monoclonal
预测反应	
应用	WB IHC IF/ICC IP FC
推荐浓度	<b>WB:</b> 1:500 - 1:2000 <b>IHC:</b> 1:50 - 1:200 <b>IF/ICC:</b> 1:50 - 1:200 <b>IP:</b> 1:20 - 1:50 <b>FC:</b> 1:20 - 1:50
理论分子量	28kDa
实测分子量	29kDa
形式	Liquid
保存条件	Store at -20°C. Avoid freeze / thaw cycles. Buffer: PBS with 0.75% BSA,50% glycerol,pH7.3.
偶联物	Unconjugated
阳性对照	SW620,Mouse kidney,Rat brain,Rat kidney
细胞定位	Cell junction,Cell membrane,Cytoplasm,Cytoplasmic vesicle membrane,Mitochondrion,Nucleus matrix,Single-pass membrane protein,centrosome,cytoskeleton,microtubule organizing center
纯化	Affinity purification

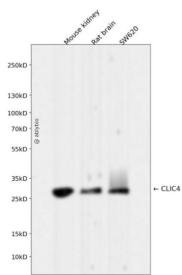
## 抗原信息

抗原信息	Recombinant fusion protein corresponding to Human CLIC4.
序列	MALSMPLNGLKEEDKEPLIELFVKAGSDGESIGNCPFSQRLFMILWLKGVVFSVTTVDLKRKPADLQNLAPGTHPPFITFNS EVKTDVNKIEEFLEEVLCPPKYLKLSPKHPESNTAGMDIFAKFSAYIKNSRPEANEALERGLLKTQLDEYLN SPLPDEIDEN SMEDIKFSTRKFLDGNEMTLADCNLLPKLHIVKVVAKKYRNFDPKEMTGIWRYLTNAYS RDEFTNTCPSDKEVEIAYS DVA KRLTK

## 靶点信息

研究背景	Chloride channels are a diverse group of proteins that regulate fundamental cellular processes including stabilization of cell membrane potential, transepithelial transport, maintenance of intracellular pH, and regulation of cell volume. Chloride intracellular channel 4 (CLIC4) protein, encoded by the CLIC4 gene, is a member of the p64 family; the gene is expressed in many tissues and exhibits a intracellular vesicular pattern in Panc-1 cells (pancreatic cancer cells).
基因ID	25932
基因名	CLIC4
Swiss	Q9Y696
别名	CLIC4;CLIC4L;H1;MTCLIC;huH1;p64H1

## 产品验证



Western blot analysis of CLIC4 expressed in Mouse kidney,Rat brain,SW620 using CLIC4 Rabbit mAb at 1:1000. Secondary antibody: HRP Goat Anti-Rabbit IgG (H+L) at 1:5000. Lysates/proteins: 30ug per lane. Blocking buffer: 5% non-fat dry milk in TBST. Detection: ECL Enhanced Kit. Exposure time: 120s.

## 实验步骤

访问官网浏览详情: [www.ablybio.cn](http://www.ablybio.cn)