

Paxillin Rabbit mAb

货号: **AYM31280**

产品信息

反应	Human,Mouse,Rat
宿主	Rabbit
克隆性	Monoclonal
预测反应	
应用	WB IHC IF/ICC IP
推荐浓度	WB: 1:500 - 1:2000 IHC: 1:50 - 1:200 IF/ICC: 1:50 - 1:200 IP: 1:20 - 1:50
理论分子量	46kDa/60kDa/64kDa/66kDa
实测分子量	60kDa
形式	Liquid
保存条件	Store at -20°C. Avoid freeze / thaw cycles. Buffer: PBS with 0.75% BSA,50% glycerol,pH7.3.
偶联物	Unconjugated
阳性对照	HeLa,3T3
细胞定位	Cell junction,Cytoplasm,cell cortex,cytoskeleton,focal adhesion
纯化	Affinity purification

抗原信息

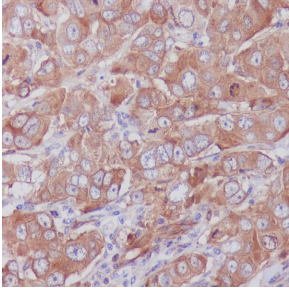
抗原信息	Recombinant fusion protein corresponding to Human Paxillin.
序列	HVYSF

靶点信息

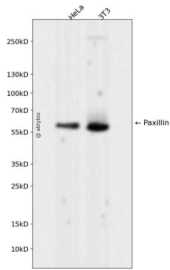
研究背景	This gene encodes a cytoskeletal protein involved in actin-membrane attachment at sites of cell adhesion to the extracellular matrix (focal adhesion). Alternatively spliced transcript variants encoding different isoforms have been described for this gene. These isoforms exhibit different expression pattern, and have different biochemical, as well as physiological properties (PMID:9054445).
基因ID	5829

基因名	PXN
Swiss	P49023
别名	Paxillin;PXN;paxillin

产品验证



Immunohistochemical analysis of paraffin-embedded human breast carcinoma, using Paxillin A antibody.



Western blot analysis of Paxillin expressed in HeLa,3T3 using Paxillin Rabbit mAb at 1:1000. Secondary antibody: HRP Goat Anti-Rabbit IgG (H+L) at 1:5000. Lysates/proteins: 30ug per lane. Blocking buffer: 5% non-fat dry milk in TBST. Detection: ECL Enhanced Kit. Exposure time: 120s

实验步骤

访问官网浏览详情: www.ablybio.cn