

# LSD2 / AOF1 Rabbit mAb

货号: **AYM31278**

## 产品信息

反应	Human,Mouse,Rat
宿主	Rabbit
克隆性	Monoclonal
预测反应	
应用	WB IF/ICC IP FC
推荐浓度	<b>WB:</b> 1:500 - 1:2000 <b>IF/ICC:</b> 1:50 - 1:200 <b>IP:</b> 1:20 - 1:50 <b>FC:</b> 1:20 - 1:50
理论分子量	92kDa
实测分子量	92kDa
形式	Liquid
保存条件	Store at -20°C. Avoid freeze / thaw cycles. Buffer: PBS with 0.75% BSA,50% glycerol,pH7.3.
偶联物	Unconjugated
阳性对照	HeLa,HCT116,HepG2
细胞定位	nucleoplasm,nucleus
纯化	Affinity purification

## 抗原信息

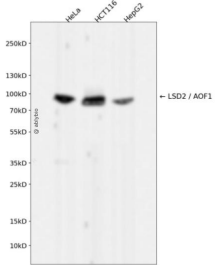
抗原信息	Recombinant fusion protein corresponding to Human LSD2 / AOF1.
序列	MATPRGRTKKKASFDHSPDSLPLRSSGRQAKKATETTTDEDEDGGSEKKYRKCEKAGCTATCPVCFASASERCAKNGYT SRWYHLSCGEHFCNECFDHYY

## 靶点信息

研究背景	Flavin-dependent histone demethylases, such as KDM1B, regulate histone lysine methylation, an epigenetic mark that regulates gene expression and chromatin function (Karytinis et al., 2009 [PubMed 19407342]).[supplied by OMIM, Oct 2009]
基因ID	221656

基因名	KDM1B
Swiss	Q8NB78
别名	AOF1; C6orf193; LSD2; bA204B7.3; dj298J15.2

## 产品验证



Western blot analysis of LSD2 / AOF1 expressed in HeLa, HCT116, HepG2 using LSD2 / AOF1 Rabbit m Ab at 1:1000. Secondary antibody: HRP Goat Anti-Rabbit IgG (H+L) at 1:5000. Lysates/proteins: 30u g per lane. Blocking buffer: 5% non-fat dry milk in TBST. Detection: ECL Enhanced Kit. Exposure time : 120s.

## 实验步骤

访问官网浏览详情: [www.ablybio.cn](http://www.ablybio.cn)