

Aly Rabbit mAb

货号: **AYM31277**

产品信息

反应	Human,Mouse,Rat
宿主	Rabbit
克隆性	Monoclonal
预测反应	
应用	WB IHC IF/ICC IP FC
推荐浓度	WB: 1:500 - 1:2000 IHC: 1:50 - 1:200 IF/ICC: 1:50 - 1:200 IP: 1:20 - 1:50 FC: 1:20 - 1:50
理论分子量	26kDa
实测分子量	27kDa
形式	Liquid
保存条件	Store at -20°C. Avoid freeze / thaw cycles. Buffer: PBS with 0.75% BSA,50% glycerol,pH7.3.
偶联物	Unconjugated
阳性对照	HeLa,A-549,B cells,SKOV3,HL-60,Mouse testis,Mouse spleen,Mouse thymus,Rat brain
细胞定位	Cytoplasm,Nucleus,Nucleus speckle
纯化	Affinity purification

抗原信息

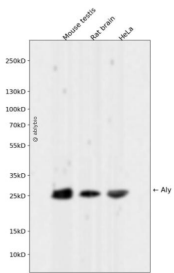
抗原信息	Recombinant fusion protein corresponding to Human Aly.
序列	MPDSAPAMADKMDMSLDDIIKLNRSQRGGGRGGGRGRGRAGSQGGRRGGGAQAAARVNRGGGPIRNRPAIARGAAGGG GRNRPAYSRPKQLPDKWQHDLFD

靶点信息

研究背景	The protein encoded by this gene is a heat stable, nuclear protein and functions as a molecular chaperone. It is thought to regulate dimerization, DNA binding, and transcriptional activity of basic region-leucine zipper (bZIP) proteins.
------	--

基因ID	10189
基因名	ALYREF
Swiss	Q86V81
别名	ALYREF;ALY;ALY/REF;BEF;REF;THOC4

产品验证



Western blot analysis of Aly expressed in Mouse testis,Rat brain,HeLa using Aly Rabbit mAb at 1:1000. Secondary antibody: HRP Goat Anti-Rabbit IgG (H+L) at 1:5000. Lysates/proteins: 30ug per lane. Blocking buffer: 5% non-fat dry milk in TBST. Detection: ECL Enhanced Kit. Exposure time: 120s.

实验步骤

访问官网浏览详情: www.ablybio.cn