

Midkine Rabbit mAb

货号: **AYM31273**

产品信息

反应	Human
宿主	Rabbit
克隆性	Monoclonal
预测反应	
应用	WB IHC IF/ICC IP
推荐浓度	WB: 1:500 - 1:2000 IHC: 1:50 - 1:200 IF/ICC: 1:50 - 1:200 IP: 1:20 - 1:50
理论分子量	9kDa/15kDa
实测分子量	16kDa
形式	Liquid
保存条件	Store at -20°C. Avoid freeze / thaw cycles. Buffer: PBS with 0.75% BSA,50% glycerol,pH7.3.
偶联物	Unconjugated
阳性对照	SH-SY5Y
细胞定位	Secreted
纯化	Affinity purification

抗原信息

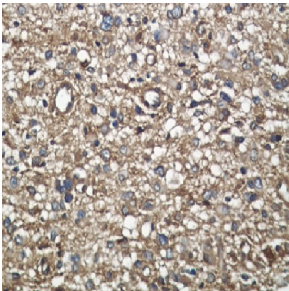
抗原信息	Recombinant fusion protein corresponding to Human Midkine .
序列	SECAEWAWGPCTPSSKDCGVGFREGTCTGAQTQRIRCRVPCNWKKEFGADCKYKFENWGACDGGTGTKVRQGTLKKA RYNAQCQETIRVTKPCTPK

靶点信息

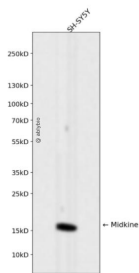
研究背景	This gene encodes a member of a small family of secreted growth factors that binds heparin and respond s to retinoic acid. The encoded protein promotes cell growth, migration, and angiogenesis, in particular d uring tumorigenesis. This gene has been targeted as a therapeutic for a variety of different disorders. Alte rnatively spliced transcript variants encoding multiple isoforms have been observed.
------	---

基因ID	4192
基因名	MDK
Swiss	P21741
别名	MDK;ARAP;MK;NEGF2;midkine

产品验证



Immunohistochemical analysis of paraffin-embedded human liver carcinoma, using Midkine Antibody .



Western blot analysis of Midkine expressed in SH-SY5Y using Midkine Rabbit mAb at 1:1000. Secondary antibody: HRP Goat Anti-Rabbit IgG (H+L) at 1:5000. Lysates/proteins: 30ug per lane. Blocking buffer: 5% non-fat dry milk in TBST. Detection: ECL Enhanced Kit. Exposure time: 120s .

实验步骤

访问官网浏览详情: www.ablybio.cn