

— ABLYBIO, Help Your Research



Synaptophysin Rabbit mAb

货号: **AYM31267**

产品信息

反应	Human,Mouse,Rat
宿主	Rabbit
克隆性	Monoclonal
预测反应	
应用	WB IHC IF/ICC IP FC
推荐浓度	WB: 1:500 - 1:2000 IHC: 1:50 - 1:200 IF/ICC: 1:50 - 1:200 IP: 1:20 - 1:50 FC: 1:20 - 1:50
理论分子量	20kDa/33kDa
实测分子量	38kDa
形式	Liquid
保存条件	Store at -20°C. Avoid freeze / thaw cycles. Buffer: PBS with 0.75% BSA,50% glycerol,pH7.3.
偶联物	Unconjugated
阳性对照	SH-SY5Y,Mouse lung,Mouse kidney,Rat lung
细胞定位	Cell junction,Cytoplasmic vesicle,Multi-pass membrane protein,secretory vesicle,synapse,synaptic vesicle membrane,synaptosome
纯化	Affinity purification

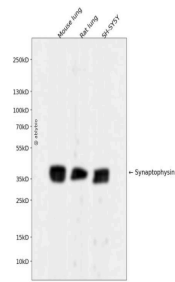
抗原信息

抗原信息	Recombinant fusion protein corresponding to Human Synaptophysin .
------	---

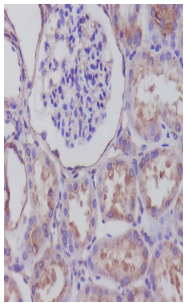
靶点信息

研究背景	This gene encodes an integral membrane protein of small synaptic vesicles in brain and endocrine cells. The protein also binds cholesterol and is thought to direct targeting of vesicle-associated membrane protein 2 (synaptobrevin) to intracellular compartments. Mutations in this gene are associated with X-linked mental retardation (XLMR).
基因ID	6855
基因名	SYP
Swiss	P08247
别名	Synaptophysin,Synaptophysin Rabbit mAb,SYP,Major synaptic vesicle protein p38

产品验证



Western blot analysis of Synaptophysin expressed in Mouse lung,Rat lung,SH-SY5Y using Synaptophysin Rabbit mAb at 1:1000. Secondary antibody: HRP Goat Anti-Rabbit IgG (H+L) at 1:5000. Lysates/proteins: 30 ug per lane. Blocking buffer: 5% non-fat dry milk in TBST. Detection: ECL Enhanced Kit. Exposure time: 12 0s.



Immunohistochemical analysis of paraffin-embedded human kidney, using Synaptophysin Antibody .

实验步骤

访问官网浏览详情: www.ablybio.cn (<https://www.ablybio.cn/www.ablybio.cn>)