

GABA A Receptor beta 1 Rabbit mAb

货号: **AYM31265**

产品信息

反应	Human,Mouse,Rat
宿主	Rabbit
克隆性	Monoclonal
预测反应	
应用	WB
推荐浓度	WB: 1:500 - 1:2000
理论分子量	48kDa
实测分子量	48kDa
形式	Liquid
保存条件	Store at -20°C. Avoid freeze / thaw cycles. Buffer: PBS with 0.75% BSA,50% glycerol,pH7.3.
偶联物	Unconjugated
阳性对照	SH-SY5Y,Mouse spinal cord,Mouse brain,Rat brain
细胞定位	cytoplasm,dendrite,GABA-ergic synapse,neuron projection,nuclear envelope,plasma membrane,postsynaptic specialization membrane,presynaptic active zone membrane,Schaffer collateral - CA1 synapse,synapse
纯化	Affinity purification

抗原信息

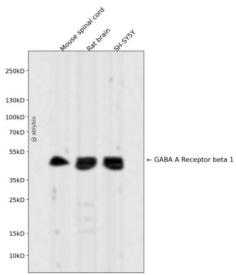
抗原信息	Recombinant fusion protein corresponding to Human GABA A Receptor beta 1.
序列	EKNKLEMNKVQVDAHGNIILLSTLEIRNETSGSEVLTSVSDPKATMYSYDSASIQYRKPLSSREAYGRALDRHGVPSKGRIRRRASQLKVKIPDLTDVNSID

靶点信息

研究背景	The gamma-aminobutyric acid (GABA) A receptor is a multisubunit chloride channel that mediates the fastest inhibitory synaptic transmission in the central nervous system. This gene encodes GABA A receptor, beta 1 subunit. It is mapped to chromosome 4p12 in a cluster comprised of genes encoding alpha 4, alpha 2 and gamma 1 subunits of the GABA A receptor. Alteration of this gene is implicated in the pathogenesis of schizophrenia. [provided by RefSeq, Jul 2008]
------	---

基因ID	2560
基因名	GABRB1
Swiss	P18505
别名	EIEE45

产品验证



Western blot analysis of GABA A Receptor beta 1 expressed in Mouse spinal cord,Rat brain,SH-SY5 Y using GABA A Receptor beta 1 Rabbit mAb at 1:1000. Secondary antibody: HRP Goat Anti-Rabbit IgG (H+L) at 1:5000. Lysates/proteins: 30ug per lane. Blocking buffer: 5% non-fat dry milk in TBST. Detection: ECL Enhanced Kit. Exposure time: 120s.

实验步骤

访问官网浏览详情: www.ablybio.cn