

PDE2A Rabbit mAb

货号: **AYM31264**

产品信息

| | |
|-------|---|
| 反应 | Human,Mouse,Rat |
| 宿主 | Rabbit |
| 克隆性 | Monoclonal |
| 预测反应 | |
| 应用 | WB |
| 推荐浓度 | WB: 1:500 - 1:2000 |
| 理论分子量 | |
| 实测分子量 | 106kDa |
| 形式 | Liquid |
| 保存条件 | Store at -20°C. Avoid freeze / thaw cycles. Buffer: PBS with 0.75% BSA,50% glycerol,pH7.3. |
| 偶联物 | Unconjugated |
| 阳性对照 | mouse brain tissue, mouse heart tissue |
| 细胞定位 | |
| 纯化 | Affinity purification |

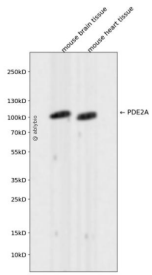
抗原信息

| | |
|------|--|
| 抗原信息 | Recombinant fusion protein corresponding to Human PDE2A. |
| 序列 | |

靶点信息

| | |
|--------------|--------|
| 研究背景 | |
| 基因ID | |
| 基因名 | |
| Swiss | O00408 |
| 别名 | |

产品验证



Western blot analysis of PDE2A expressed in mouse brain tissue, mouse heart tissue using PDE2A Rabbit mAb at 1:1000. Secondary antibody: HRP Goat Anti-Rabbit IgG (H+L) at 1:5000. Lysates/proteins: 30ug per lane. Blocking buffer: 5% non-fat dry milk in TBST. Detection: ECL Enhanced Kit. Exposure time: 120s.

实验步骤

访问官网浏览详情: www.ablybio.cn