

GLU2B Rabbit mAb

货号: **AYM31261**

产品信息

反应	Human
宿主	Rabbit
克隆性	Monoclonal
预测反应	
应用	WB IHC IF/ICC
推荐浓度	WB: 1:500 - 1:2000 IHC: 1:50 - 1:200 IF/ICC: 1:50 - 1:200
理论分子量	80kDa
实测分子量	80kDa
形式	Liquid
保存条件	Store at -20°C. Avoid freeze / thaw cycles. Buffer: PBS with 0.75% BSA,50% glycerol,pH7.3.
偶联物	Unconjugated
阳性对照	HepG2,A-549,SKOV3
细胞定位	Endoplasmic reticulum
纯化	Affinity purification

抗原信息

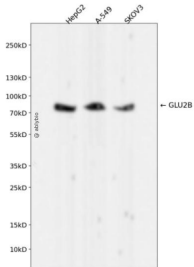
抗原信息	Recombinant fusion protein corresponding to Human GLU2B.
序列	PFKLVSQPKLGGSPSLGTWGSWIGPDHDKFSAMKYEQGTGCWQGPNRSTTVRLLCGKETMVTSTTEPSRCEYLMEL MTPAACPEPPPEAPTEDDHDEL

靶点信息

研究背景	This gene encodes the beta-subunit of glucosidase II, an N-linked glycan-processing enzyme in the endoplasmic reticulum. The encoded protein is an acidic phosphoprotein known to be a substrate for protein kinase C. Mutations in this gene have been associated with the autosomal dominant polycystic liver disease. Alternative splicing results in multiple transcript variants.
基因ID	5589

基因名	PRKCSH
Swiss	P14314
别名	PRKCSH; AGE-R2; G19P1; GIIB; PCLD; PCLD1; PKCSH; PLD1; VASAP-60; glucosidase 2 subunit beta

产品验证



Western blot analysis of GLU2B expressed in HepG2,A-549,SKOV3 using GLU2B Rabbit mAb at 1:1000. Secondary antibody: HRP Goat Anti-Rabbit IgG (H+L) at 1:5000. Lysates/proteins: 30ug per lane. Blocking buffer: 5% non-fat dry milk in TBST. Detection: ECL Enhanced Kit. Exposure time: 120s.

实验步骤

访问官网浏览详情: www.ablybio.cn