

CSDE1 Rabbit mAb

货号: **AYM31257**

产品信息

反应	Human,Mouse,Rat
宿主	Rabbit
克隆性	Monoclonal
预测反应	
应用	WB IHC IF/ICC IP
推荐浓度	WB: 1:500 - 1:2000 IHC: 1:50 - 1:200 IF/ICC: 1:50 - 1:200 IP: 1:20 - 1:50
理论分子量	85kDa/88kDa/90kDa/93kDa
实测分子量	89kDa
形式	Liquid
保存条件	Store at -20°C. Avoid freeze / thaw cycles. Buffer: PBS with 0.75% BSA,50% glycerol,pH7.3.
偶联物	Unconjugated
阳性对照	HeLa
细胞定位	Cytoplasm
纯化	Affinity purification

抗原信息

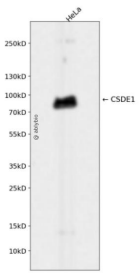
抗原信息	Recombinant fusion protein corresponding to Human CSDE1.
序列	LSAQRNHAIKIKLPGKTVSFHSHSDHRFLGTVEKEATFSNPKTTSPNKGKEKEAEDGIIAYDDCGVKLTIAFQAKDVEGST SPQIGDKVEFSISDKQRPGQVATCVRLGRNSNSKRLLGYVATLKDNGFIETANHDKEIFFHYSEFGDVSLELGDMV EYLSKGGKGNKVS AEKVNKTHSVNGITEEADPTIYSGKVIPLRSVDPTQTEYQGMIEIVEEGDMKGEV

靶点信息

研究背景	RNA-binding protein involved in translationally coupled mRNA turnover. Implicated with other RNA-binding proteins in the cytoplasmic deadenylation/translational and decay interplay of the FOS mRNA mediated by the major coding-region determinant of instability (mCRD domain. Required for efficient formation of stress granules.
------	--

基因ID	7812
基因名	CSDE1
Swiss	O75534
别名	CSDE1;D1S155E;UNR

产品验证



Western blot analysis of CSDE1 expressed in HeLa using CSDE1 Rabbit mAb at 1:1000. Secondary antibody: HRP Goat Anti-Rabbit IgG (H+L) at 1:5000. Lysates/proteins: 30ug per lane. Blocking buffer: 5% non-fat dry milk in TBST. Detection: ECL Enhanced Kit. Exposure time: 120s.

实验步骤

访问官网浏览详情: www.ablybio.cn