

CPSF73 Rabbit mAb

货号: **AYM31250**

产品信息

反应	Human,Mouse,Rat
宿主	Rabbit
克隆性	Monoclonal
预测反应	
应用	WB IF/ICC FC
推荐浓度	WB: 1:500 - 1:2000 IF/ICC: 1:50 - 1:200 FC: 1:20 - 1:50
理论分子量	77kDa
实测分子量	77kDa
形式	Liquid
保存条件	Store at -20°C. Avoid freeze / thaw cycles. Buffer: PBS with 0.75% BSA,50% glycerol,pH7.3.
偶联物	Unconjugated
阳性对照	HeLa,293T,SH-SY5Y,Mouse liver,Mouse kidney,Mouse uterus,Rat spleen
细胞定位	Nucleus
纯化	Affinity purification

抗原信息

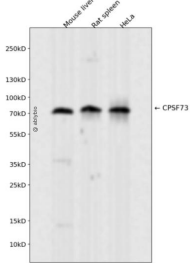
抗原信息	Recombinant fusion protein corresponding to Human CPSF73.
序列	LEVQSNPKIRKGA VQKVSKKLEMHVYSKRLEIMLQDIFGEDCVSVKDDSI LSVTVDGKTANLNLETRTVECEE GSEDDSL REMV ELAAQR LYEALTPVH

靶点信息

研究背景	This gene encodes a member of the metallo-beta-lactamase family. The encoded protein is a 73kDa subunit of the cleavage and polyadenylation specificity factor and functions as an endonuclease that recognizes the pre-mRNA 3'-cleavage site AAUAAA prior to polyadenylation. It also cleaves after the pre-mRNA sequence ACCCA during histone 3'-end pre-mRNA processing.
基因ID	51692

基因名	CPSF3
Swiss	Q9UKF6
别名	CPSF3; CPSF-73; CPSF73; cleavage and polyadenylation specific factor 3

产品验证



Western blot analysis of CPSF73 expressed in Mouse liver, Rat spleen, HeLa using CPSF73 Rabbit mAb at 1:1000. Secondary antibody: HRP Goat Anti-Rabbit IgG (H+L) at 1:5000. Lysates/proteins: 30ug per lane. Blocking buffer: 5% non-fat dry milk in TBST. Detection: ECL Enhanced Kit. Exposure time: 120s.

实验步骤

访问官网浏览详情: www.ablybio.cn