

# PAX6 Rabbit mAb

货号: **AYM31245**

## 产品信息

反应	Human,Mouse,Rat
宿主	Rabbit
克隆性	Monoclonal
预测反应	
应用	WB IHC FC
推荐浓度	<b>WB:</b> 1:500 - 1:2000 <b>IHC:</b> 1:50 - 1:200 <b>FC:</b> 1:20 - 1:50
理论分子量	46kDa/48kDa
实测分子量	47kDa
形式	Liquid
保存条件	Store at -20°C. Avoid freeze / thaw cycles. Buffer: PBS with 0.75% BSA,50% glycerol,pH7.3.
偶联物	Unconjugated
阳性对照	Mouse brain,Rat brain
细胞定位	Nucleus
纯化	Affinity purification

## 抗原信息

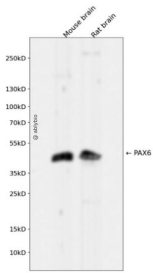
抗原信息	Recombinant fusion protein corresponding to Human PAX6.
序列	ISSNGEDSDEAQMLRQLKRKLQRNRTSFTQEIEALEKEFERTHYPDVFARERLAAKIDLPEARIQVWFSNRRRAKWRREEKLRNQRRQASN

## 靶点信息

研究背景	This gene encodes a homeobox and paired domain-containing protein that binds DNA and functions as a regulator of transcription. Activity of this protein is key in the development of neural tissues, particularly the eye. This gene is regulated by multiple enhancers located up to hundreds of kilobases distant from this locus. Mutations in this gene or in the enhancer regions can cause ocular disorders such as aniridia and Peter's anomaly. Use of alternate promoters and alternative splicing result in multiple transcript variants encoding different isoforms.
------	--

基因ID	5080
基因名	PAX6
Swiss	P26367
别名	AN;AN2;ASGD5;D11S812E;FVH1;MGDA;WAGR;PAX6

## 产品验证



Western blot analysis of PAX6 expressed in Mouse brain,Rat brain using PAX6 Rabbit mAb at 1:1000. Secondary antibody: HRP Goat Anti-Rabbit IgG (H+L) at 1:5000. Lysates/proteins: 30ug per lane. Blocking buffer: 5% non-fat dry milk in TBST. Detection: ECL Enhanced Kit. Exposure time: 120s.

## 实验步骤

访问官网浏览详情: [www.ablybio.cn](http://www.ablybio.cn)