

# TCL1 Rabbit mAb

货号: **AYM31242**

## 产品信息

反应	Human
宿主	Rabbit
克隆性	Monoclonal
预测反应	
应用	WB IHC IF/ICC FC
推荐浓度	<b>WB:</b> 1:500 - 1:2000 <b>IHC:</b> 1:50 - 1:200 <b>IF/ICC:</b> 1:50 - 1:200 <b>FC:</b> 1:20 - 1:50
理论分子量	13kDa
实测分子量	13kDa
形式	Liquid
保存条件	Store at -20°C. Avoid freeze / thaw cycles. Buffer: PBS with 0.75% BSA,50% glycerol,pH7.3.
偶联物	Unconjugated
阳性对照	Ramos
细胞定位	Cytoplasm,Endoplasmic reticulum,Microsome,Nucleus
纯化	Affinity purification

## 抗原信息

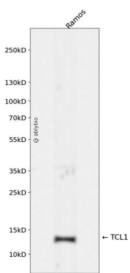
抗原信息	Recombinant fusion protein corresponding to Human TCL1.
序列	MAECP TLGEAVTDHPDRLWAW EK FVYLDEKQHAWLPLTIEIKDRLQLRVLLRREDVVLGRPMTPTQIGPSLLPIMWQLYPDGRYRSSDSSFWRLVYHIKIDGVEDMLELLPPDD

## 靶点信息

研究背景	Overexpression of the TCL1 gene in humans has been implicated in the development of mature T cell leukemia, in which chromosomal rearrangements bring the TCL1 gene in close proximity to the T-cell antigen receptor (TCR)-alpha (MIM 186880) or TCR-beta (MIM 186930) regulatory elements (summarized by Virgilio et al., 1998 [PubMed 9520462]). In normal T cells TCL1 is expressed in CD4-/CD8- cells, but not in cells at later stages of differentiation. TCL1 functions as a coactivator of the cell survival kinase AKT (MIM 164730) (Laine et al., 2000 [PubMed 10983986]).[supplied by OMIM, Jul 2010]
------	---

基因ID	8115
基因名	TCL1A
Swiss	P56279
别名	TCL1A;TCL1

### 产品验证



Western blot analysis of TCL1 expressed in Ramos using TCL1 Rabbit mAb at 1:1000. Secondary antibody: HRP Goat Anti-Rabbit IgG (H+L) at 1:5000. Lysates/proteins: 30ug per lane. Blocking buffer: 5% non-fat dry milk in TBST. Detection: ECL Enhanced Kit. Exposure time: 120s.

### 实验步骤

访问官网浏览详情: [www.ablybio.cn](http://www.ablybio.cn)