

— ABLYBIO, Help Your Research



CD11b Rabbit mAb

货号: **AYM31235**

产品信息

反应	Human
宿主	Rabbit
克隆性	Monoclonal
预测反应	
应用	WB IHC IP FC
推荐浓度	WB: 1:500 - 1:2000 IHC: 1:50 - 1:200 IF/ICC: 1:50 - 1:200 IP: 1:20 - 1:50 FC: 1:20 - 1:50
理论分子量	127kDa
实测分子量	170kDa
形式	Liquid
保存条件	Store at -20°C. Avoid freeze / thaw cycles. Buffer: PBS with 0.75% BSA,50% glycerol,pH7.3.
偶联物	Unconjugated
阳性对照	THP-1,U-937,Mouse lung,Mouse brain,Mouse spleen,Rat lung
细胞定位	Membrane,Single-pass type I membrane protein
纯化	Affinity purification

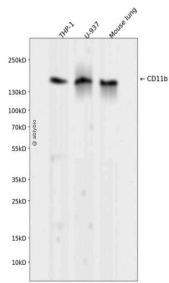
抗原信息

抗原信息	Recombinant fusion protein corresponding to Human CD11b.
------	--

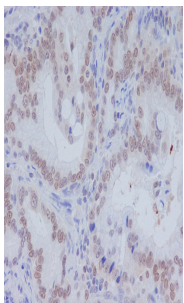
靶点信息

研究背景	This gene encodes the integrin alpha M chain. Integrins are heterodimeric integral membrane proteins composed of an alpha chain and a beta chain. This I-domain containing alpha integrin combines with the beta 2 chain (ITGB2) to form a leukocyte-specific integrin referred to as macrophage receptor 1 ('Mac-1'), or inactivated-C3b (iC3b) receptor 3 ('CR3'). The alpha M beta 2 integrin is important in the adherence of neutrophils and monocytes to stimulated endothelium, and also in the phagocytosis of complement coated particles. Multiple transcript variants encoding different isoforms have been found for this gene.
基因ID	3684
基因名	ITGAM
Swiss	P11215
别名	CD11b,Antigen CD11b p170;CD11 antigen like family member B;CD11 antigen-like family member B;CD11b;CD11b/CD18;CD49d;Cell surface glycoprotein MAC-1 subunit alpha;Complement component 3 receptor 3 subunit;Complement Component Receptor 3 Alpha;Complement receptor type 3, alpha subunit;CR 3 alpha chain (CR3A);CR 3 alpha chain;CR-3 alpha chain;CR3;CR3A;F730045J24Rik;Integrin Alpha M;Integrin alpha M chain;Integrin alpha-M;Integrin beta 2 alpha subunit;Integrin subunit alpha M;integrin, alpha M (complement component 3 receptor 3 subunit);ITAM_HUMAN;ITGAM;Leukocyte adhesion receptor MO1;Ly-40;MAC 1;Mac-1a;MAC1

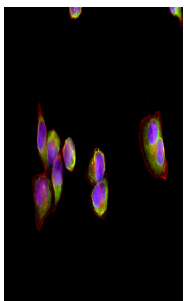
产品验证



Western blot analysis of CD11b expressed in THP-1,U-937,Mouse lung using CD11b Rabbit mAb at 1:1000. Secondary antibody: HRP Goat Anti-Rabbit IgG (H+L) at 1:5000. Lysates/proteins: 30ug per lane. Blocking buffer: 5% non-fat dry milk in TBST. Detection: ECL Enhanced Kit. Exposure time: 120s.



Immunohistochemical analysis of paraffin-embedded human colon carcinoma, using CD11b Antibody.



The samples were fixed with PFA and permeabilized in 0.1% Triton X-100,then blocked in 10% serum for 45 minutes at 25°C. Samples were then incubated with primary Ab CD11B and Rabbit actin for 1 hour at 37°C. An AlexaFluor594 conjugated goat anti-rabbit IgG(H+L) Ab(Red) and an AlexaFluor488 conjugated goat. The nuclear counter stain is DAPI(blue).

实验步骤

访问官网浏览详情: www.ablybio.cn (<https://www.ablybio.cn/www.ablybio.cn>)