

# Mast Cell Chymase Rabbit mAb

货号: **AYM31223**

## 产品信息

反应	Human
宿主	Rabbit
克隆性	Monoclonal
预测反应	
应用	WB IHC
推荐浓度	<b>WB:</b> 1:500 - 1:2000 <b>IHC:</b> 1:50 - 1:200
理论分子量	27kDa
实测分子量	27kDa
形式	Liquid
保存条件	Store at -20°C. Avoid freeze / thaw cycles. Buffer: PBS with 0.75% BSA, 50% glycerol, pH7.3.
偶联物	Unconjugated
阳性对照	A-549, Mouse heart, Rat lung, Rat small intestine
细胞定位	Cytoplasmic granule, Secreted
纯化	Affinity purification

## 抗原信息

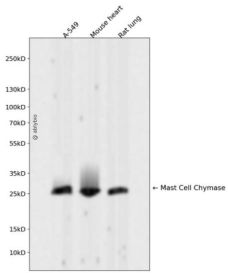
抗原信息	Recombinant fusion protein corresponding to Human Mast Cell Chymase.
序列	GWGRTGVLKPGSDTLQEVKLRRLMDPQACSHFRDFDHNLQLCVGNPRKTKSAFKGDSGGPLLCAQVAQGIVSYGRSDAK PPAVFTRISHYRPWINQILQAN

## 靶点信息

研究背景	This gene encodes a chymotryptic serine proteinase that belongs to the peptidase family S1. It is expressed in mast cells and is thought to function in the degradation of the extracellular matrix, the regulation of submucosal gland secretion, and the generation of vasoactive peptides. In the heart and blood vessels, this protein, rather than angiotensin converting enzyme, is largely responsible for converting angiotensin I to the vasoactive peptide angiotensin II. Alternative splicing results in multiple variants. [provided by RefSeq, Apr 2015]
------	--

基因ID	1215
基因名	CMA1
Swiss	P23946
别名	CYH; MCT1; chymase

## 产品验证



Western blot analysis of Mast Cell Chymase expressed in A-549, Mouse heart, Rat lung using Mast Cell Chymase Rabbit mAb at 1:1000. Secondary antibody: HRP Goat Anti-Rabbit IgG (H+L) at 1:5000. Lysates/proteins: 30ug per lane. Blocking buffer: 5% non-fat dry milk in TBST. Detection: ECL Enhanced Kit. Exposure time: 120s.

## 实验步骤

访问官网浏览详情: [www.ablybio.cn](http://www.ablybio.cn)