

MRPL28 Rabbit mAb

货号: **AYM31219**

产品信息

反应	Human,Mouse,Rat
宿主	Rabbit
克隆性	Monoclonal
预测反应	
应用	WB IF/ICC IP FC
推荐浓度	WB: 1:500 - 1:2000 IF/ICC: 1:50 - 1:200 IP: 1:20 - 1:50 FC: 1:20 - 1:50
理论分子量	30kDa
实测分子量	30kDa
形式	Liquid
保存条件	Store at -20°C. Avoid freeze / thaw cycles. Buffer: PBS with 0.75% BSA,50% glycerol,pH7.3.
偶联物	Unconjugated
阳性对照	MCF7,HepG2,293T,A-549
细胞定位	Mitochondrion
纯化	Affinity purification

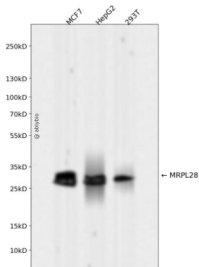
抗原信息

抗原信息	Recombinant fusion protein corresponding to Human MRPL28.
序列	MPLHKYPVWLWKRLQLREGICSRLLPGHYLRSLEEERTPTPVHYRPHGAKFKINPKNGQRERVEDVPIPIYFPPEQRGLWG GEGWILGQIYANNDKLSKRLKVKWPQLFEREFYSEILDKKFTVTVMRTLIDLIDEAYGLDFYILKTPKEDLCSKFGMDLKR GMLLRRLARQDPQLHPEDPERRAAIYDKYKEFAIPEEEAEWVGLTLEEAIKQRLLEEKDPVPLFKIYVAELIQQLQQALSEPA VVQKRASGQ

靶点信息

研究背景	Mammalian mitochondrial ribosomal proteins are encoded by nuclear genes and help in protein synthesis within the mitochondrion. Mitochondrial ribosomes (mitoribosomes) consist of a small 28S subunit and a large 39S subunit. They have an estimated 75% protein to rRNA composition compared to prokaryotic ribosomes, where this ratio is reversed. Another difference between mammalian mitoribosomes and prokaryotic ribosomes is that the latter contain a 5S rRNA. Among different species, the proteins comprising the mitoribosome differ greatly in sequence, and sometimes in biochemical properties, which prevents easy recognition by sequence homology. This gene encodes a 39S subunit protein, a part of which was originally isolated by its ability to recognize tyrosinase in an HLA-A24-restricted fashion.
基因ID	10573
基因名	MRPL28
Swiss	Q13084
别名	MRPL28;MAAT1;p15

产品验证



Western blot analysis of MRPL28 expressed in MCF7, HepG2, 293T using MRPL28 Rabbit mAb at 1:1000. Secondary antibody: HRP Goat Anti-Rabbit IgG (H+L) at 1:5000. Lysates/proteins: 30ug per lane. Blocking buffer: 5% non-fat dry milk in TBST. Detection: ECL Enhanced Kit. Exposure time: 120s.

实验步骤

访问官网浏览详情: www.ablybio.cn