

POLD1 Rabbit mAb

货号: **AYM31218**

产品信息

反应	Human,Mouse,Rat
宿主	Rabbit
克隆性	Monoclonal
预测反应	
应用	WB IHC IF/ICC FC
推荐浓度	WB: 1:500 - 1:2000 IHC: 1:50 - 1:200 IF/ICC: 1:50 - 1:200 FC: 1:20 - 1:50
理论分子量	123kDa
实测分子量	124kDa
形式	Liquid
保存条件	Store at -20°C. Avoid freeze / thaw cycles. Buffer: PBS with 0.75% BSA,50% glycerol,pH7.3.
偶联物	Unconjugated
阳性对照	HeLa,SW480,Mouse spleen
细胞定位	Nucleus
纯化	Affinity purification

抗原信息

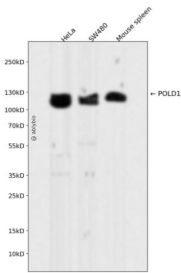
抗原信息	Recombinant fusion protein corresponding to Human POLD1.
序列	RYAGLLFSSRPDAHDRMDCKGLEAVRRDNCPLVANLVTAASLRRLIDRDPEGAVAHAQDVISDLLCNRIDISQLVITKELTR AASDYAGKQAHVELAERMKRDPGSAPSLGDRVPYVIISAAGVAAYMKSEDPLFVLEHSLPIDTQYYLEQQLAKPLLRIFE PILGEGRAEAVLLRGDHTRCTVLTGKVGGLLAFARRNCCIGCRTVLSHQGAVCEFCQPRESELYQKEVSHLNALEERFS RLWTQCQRCQGS LHEDVICTSRDCPIFYMRKKVRKDLEDQEQLLRFRGPPGPEAW

靶点信息

研究背景	This gene encodes the 125-kDa catalytic subunit of DNA polymerase delta. DNA polymerase delta possesses both polymerase and 3' to 5' exonuclease activity and plays a critical role in DNA replication and repair. Alternatively spliced transcript variants have been observed for this gene, and a pseudogene of this gene is located on the long arm of chromosome 6.
------	--

基因ID	5424
基因名	POLD1
Swiss	P28340
别名	POLD1;CDC2;CRCS10;MDPL;POLD

产品验证



Western blot analysis of POLD1 expressed in HeLa, SW480, Mouse spleen using POLD1 Rabbit mAb at 1:1000. Secondary antibody: HRP Goat Anti-Rabbit IgG (H+L) at 1:5000. Lysates/proteins: 30ug per lane. Blocking buffer: 5% non-fat dry milk in TBST. Detection: ECL Enhanced Kit. Exposure time: 120s.

实验步骤

访问官网浏览详情: www.ablybio.cn