

SLP2 Rabbit mAb

货号: **AYM31207**

产品信息

反应	Human,Mouse,Rat
宿主	Rabbit
克隆性	Monoclonal
预测反应	
应用	WB ICC IP FC
推荐浓度	WB: 1:500 - 1:2000 ICC: 1:50 - 1:200 IP: 1:20 - 1:50 FC: 1:20 - 1:50
理论分子量	33kDa/38kDa
实测分子量	39kDa
形式	Liquid
保存条件	Store at -20°C. Avoid freeze / thaw cycles. Buffer: PBS with 0.75% BSA,50% glycerol,pH7.3.
偶联物	Unconjugated
阳性对照	U-87MG,A375,A-549,B-cell,Mouse liver,Mouse kidney,Rat liver,Rat thymus
细胞定位	Cell membrane,Membrane raft,Mitochondrion inner membrane,Mitochondrion intermembrane space,Peripheral membrane protein
纯化	Affinity purification

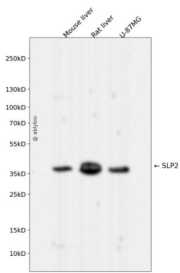
抗原信息

抗原信息	Recombinant fusion protein corresponding to Human SLP2.
序列	SSGLPRNTVVLFPQQEAWVVERMGRFHRILEPGLNILIPVLDRIYVQSLKEIVINVPEQSAVTLDNVTLQIDGVLYLRIMDP YKASYGVEDPEYAVTQLAQTTRSELGKLSLDKVFRRERESLNASIVDAINQAADCWGIRCLRYEIKDIHVPPRVKESMQMQ VEAERRKRATVLESEGTRESAINVAEGKKQAQILASEAEKAEQINQAAGEASAVLAKAKAKAEAIRILAAALTQHNGDAAASL TVAEQYVSFAFSKLAKDSNTILLPSNPGDVTSMVAQAMGVYGALTKAPVPGTPDSLSSGSSRDVQGTDAASLDEELDRVKM S

靶点信息

研究背景	Mitochondrial protein that probably regulates the biogenesis and the activity of mitochondria. Stimulates cardiolipin biosynthesis, binds cardiolipin-enriched membranes where it recruits and stabilizes some proteins including prohibitin and may therefore act in the organization of functional microdomains in mitochondrial membranes. Through regulation of the mitochondrial function may play a role into several biological processes including cell migration, cell proliferation, T-cell activation, calcium homeostasis and cellular response to stress. May play a role in calcium homeostasis through negative regulation of calcium efflux from mitochondria. Required for mitochondrial hyperfusion a pro-survival cellular response to stress which results in increased ATP production by mitochondria. May also regulate the organization of functional domains at the plasma membrane and play a role in T-cell activation through association with the T-cell receptor signaling complex and its regulation.
基因ID	30968
基因名	STOML2
Swiss	Q9UJZ1
别名	STOML2;HSPC108;SLP-2

产品验证



Western blot analysis of SLP2 expressed in Mouse liver,Rat liver,U-87MG using SLP2 Rabbit mAb at 1:1000. Secondary antibody: HRP Goat Anti-Rabbit IgG (H+L) at 1:5000. Lysates/proteins: 30ug per lane. Blocking buffer: 5% non-fat dry milk in TBST. Detection: ECL Enhanced Kit. Exposure time: 120s.

实验步骤

访问官网浏览详情: www.ablybio.cn