

# ATP1B1 Rabbit mAb

货号: **AYM31205**

## 产品信息

反应	Human,Mouse,Rat
宿主	Rabbit
克隆性	Monoclonal
预测反应	
应用	WB IHC
推荐浓度	<b>WB:</b> 1:500 - 1:2000 <b>IHC:</b> 1:50 - 1:200
理论分子量	40-50kDa
实测分子量	40-50kDa
形式	Liquid
保存条件	Store at -20°C. Avoid freeze / thaw cycles. Buffer: PBS with 0.75% BSA,50% glycerol,pH7.3.
偶联物	Unconjugated
阳性对照	U2OS,Mouse liver,Mouse brain,Rat brain
细胞定位	Cell membrane,Single-pass type II membrane protein
纯化	Affinity purification

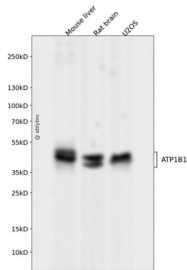
## 抗原信息

抗原信息	Recombinant fusion protein corresponding to Human ATP1B1.
序列	YNPNVLPVQCTGKRDEDKDKVGNVEYFGLGNSPGFPLQYYPYGGKLLQPKYLQPLLAVQFTNLTMDTEIRIECKAYGENIG YSEKDRFQGRFDVKIEVKS

## 靶点信息

研究背景	The protein encoded by this gene belongs to the family of Na <sup>+</sup> /K <sup>+</sup> and H <sup>+</sup> /K <sup>+</sup> ATPases beta chain proteins, and to the subfamily of Na <sup>+</sup> /K <sup>+</sup> -ATPases. Na <sup>+</sup> /K <sup>+</sup> -ATPase is an integral membrane protein responsible for establishing and maintaining the electrochemical gradients of Na and K ions across the plasma membrane. These gradients are essential for osmoregulation, for sodium-coupled transport of a variety of organic and inorganic molecules, and for electrical excitability of nerve and muscle. This enzyme is composed of two subunits, a large catalytic subunit (alpha) and a smaller glycoprotein subunit (beta). The beta subunit regulates, through assembly of alpha/beta heterodimers, the number of sodium pumps transported to the plasma membrane. The glycoprotein subunit of Na <sup>+</sup> /K <sup>+</sup> -ATPase is encoded by multiple genes. This gene encodes a beta 1 subunit. Alternatively spliced transcript variants encoding different isoforms have been described, but their biological validity is not known. [provided by RefSeq, Mar 2010]
基因ID	481
基因名	ATP1B1
Swiss	P05026
别名	ATP1B

## 产品验证



Western blot analysis of ATP1B1 expressed in Mouse liver, Rat brain, U2OS using ATP1B1 Rabbit mAb at 1:1000. Secondary antibody: HRP Goat Anti-Rabbit IgG (H+L) at 1:5000. Lysates/proteins: 30ug per lane. Blocking buffer: 5% non-fat dry milk in TBST. Detection: ECL Enhanced Kit. Exposure time: 120s.

## 实验步骤

访问官网浏览详情: [www.ablybio.cn](http://www.ablybio.cn)