

# HP1 gamma Rabbit mAb

货号: **AYM31190**

## 产品信息

反应	Human,Mouse,Rat
宿主	Rabbit
克隆性	Monoclonal
预测反应	
应用	WB IHC IP FC
推荐浓度	<b>WB:</b> 1:500 - 1:2000 <b>IHC:</b> 1:50 - 1:200 <b>IP:</b> 1:20 - 1:50 <b>FC:</b> 1:20 - 1:50
理论分子量	24kDa
实测分子量	24kDa
形式	Liquid
保存条件	Store at -20°C. Avoid freeze / thaw cycles. Buffer: PBS with 0.75% BSA,50% glycerol,pH7.3.
偶联物	Unconjugated
阳性对照	HeLa,SH-SY5Y,Mouse spleen,Mouse thymus,Rat brain
细胞定位	Nucleus
纯化	Affinity purification

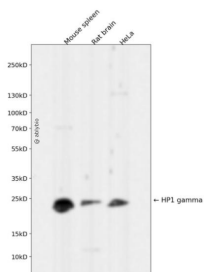
## 抗原信息

抗原信息	Recombinant fusion protein corresponding to Human HP1 gamma.
序列	MASNKTTLQKMGKKQNGKSKKVEEAPEEFVVEKVLDRRVVNGKVEYFLKWKGFDTADNTWEPEENLDCPELIEAFLNS QKAGKEKDGTKRKSLSDSESD

## 靶点信息

研究背景	At the nuclear envelope, the nuclear lamina and heterochromatin are adjacent to the inner nuclear membrane. The protein encoded by this gene binds DNA and is a component of heterochromatin. This protein also can bind lamin B receptor, an integral membrane protein found in the inner nuclear membrane. The dual binding functions of the encoded protein may explain the association of heterochromatin with the inner nuclear membrane. This protein binds histone H3 tails methylated at Lys-9 sites. This protein is also recruited to sites of ultraviolet-induced DNA damage and double-strand breaks. Two transcript variants encoding the same protein but differing in the 5' UTR, have been found for this gene.[provided by RefSeq, Mar 2011]
基因ID	11335
基因名	CBX3
Swiss	Q13185
别名	HECH; HP1-GAMMA; HP1Hs-gamma

## 产品验证



Western blot analysis of HP1 gamma expressed in Mouse spleen, Rat brain, HeLa using HP1 gamma Rabbit mAb at 1:1000. Secondary antibody: HRP Goat Anti-Rabbit IgG (H+L) at 1:5000. Lysates/proteins: 30ug per lane. Blocking buffer: 5% non-fat dry milk in TBST. Detection: ECL Enhanced Kit. Exposure time: 120s.

## 实验步骤

访问官网浏览详情: [www.ablybio.cn](http://www.ablybio.cn)