

# Glycophorin C Rabbit mAb

货号: **AYM31181**

## 产品信息

反应	Human
宿主	Rabbit
克隆性	Monoclonal
预测反应	
应用	WB IHC IF/ICC IP FC
推荐浓度	<b>WB:</b> 1:500 - 1:2000 <b>IHC:</b> 1:50 - 1:200 <b>IF/ICC:</b> 1:50 - 1:200 <b>IP:</b> 1:20 - 1:50 <b>FC:</b> 1:20 - 1:50
理论分子量	11kDa/13kDa
实测分子量	39kDa
形式	Liquid
保存条件	Store at -20°C. Avoid freeze / thaw cycles. Buffer: PBS with 0.75% BSA,50% glycerol,pH7.3.
偶联物	Unconjugated
阳性对照	HepG2,HL-60,Mouse heart
细胞定位	Cell membrane,Single-pass type III membrane protein
纯化	Affinity purification

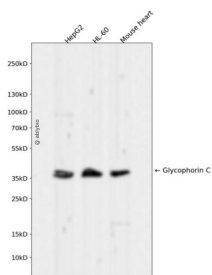
## 抗原信息

抗原信息	Recombinant fusion protein corresponding to Human Glycophorin C.
序列	MWSTRSPNSTAWPLSLEPDPGMASASTTMHTTTIAEPDPGMSGWPDGRMETSTPTIMDIVVIAGVIAAVAILVLSLLFVMLRYMYRHKGTYHTNEAKGTEFAESADAALQGDPALQDAGDSSRKEYFI

## 靶点信息

研究背景	Glycophorin C (GYPC) is an integral membrane glycoprotein. It is a minor species carried by human erythrocytes, but plays an important role in regulating the mechanical stability of red cells. A number of glycophorin C mutations have been described. The Gerbich and Yus phenotypes are due to deletion of exon 3 and 2, respectively. The Webb and Duch antigens, also known as glycophorin D, result from single point mutations of the glycophorin C gene. The glycophorin C protein has very little homology with glycophorins A and B. Alternate splicing results in multiple transcript variants.
基因ID	2995
基因名	GYPC
Swiss	P04921
别名	GYPC;CD236;CD236R;GE;GE:GPC:GPD:GYPD;GPC;GPD;GYPD;PAS-2;PAS-2

## 产品验证



Western blot analysis of Glycophorin C expressed in HepG2,HL-60,Mouse heart using Glycophorin C R abbit mAb at 1:1000. Secondary antibody: HRP Goat Anti-Rabbit IgG (H+L) at 1:5000. Lysates/proteins: 30ug per lane. Blocking buffer: 5% non-fat dry milk in TBST. Detection: ECL Enhanced Kit. Exposure time: 120s.

## 实验步骤

访问官网浏览详情: [www.ablybio.cn](http://www.ablybio.cn)