

# Fibulin 5 Rabbit mAb

货号: **AYM31178**

## 产品信息

反应	Human,Mouse
宿主	Rabbit
克隆性	Monoclonal
预测反应	
应用	WB
推荐浓度	<b>WB:</b> 1:500 - 1:2000
理论分子量	50kDa
实测分子量	50kDa
形式	Liquid
保存条件	Store at -20°C. Avoid freeze / thaw cycles. Buffer: PBS with 0.75% BSA,50% glycerol,pH7.3.
偶联物	Unconjugated
阳性对照	A-431,Mouse lung,Rat lung
细胞定位	Secreted,extracellular matrix,extracellular space
纯化	Affinity purification

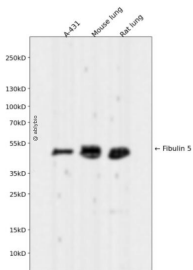
## 抗原信息

抗原信息	Recombinant fusion protein corresponding to Human Fibulin 5.
序列	NEDGRSCQDVNECATENPCVQTCVNTYGSFICRCDPGYELEEDGVHCSDMDECSFSEFLCQHECVNQPGTYFCSCPPGY ILLDDNRSCQDINECEHRNHTCNLQQTCYNLQGGFKCIDPIRCEEPYLRISDNRCMCPAENPGCRDQPFTILYRDMDVVSG RSVPADIFQMQATTRYPGAYYIFQIKSGNEGREFYMRQTGPISATLVMTRPIKGPREIQLDLEMITVNTVINFRGSSVIRLRIYY SQYPF

## 靶点信息

研究背景	The protein encoded by this gene is a secreted, extracellular matrix protein containing an Arg-Gly-Asp (RGD) motif and calcium-binding EGF-like domains. It promotes adhesion of endothelial cells through interaction of integrins and the RGD motif. It is prominently expressed in developing arteries but less so in adult vessels. However, its expression is reinduced in balloon-injured vessels and atherosclerotic lesions, notably in intimal vascular smooth muscle cells and endothelial cells. Therefore, the protein encoded by this gene may play a role in vascular development and remodeling. Defects in this gene are a cause of autosomal dominant cutis laxa, autosomal recessive cutis laxa type I (CL type I), and age-related macular degeneration type 3 (ARMD3).
基因ID	10516
基因名	FBLN5
Swiss	Q9UBX5
别名	FBLN5;ADCL2;ARCL1A;ARMD3;DANCE;EVEC;FIBL-5;HNARMD;UP50;fibulin-5

## 产品验证



Western blot analysis of Fibulin 5 expressed in A-431, Mouse lung, Rat lung using Fibulin 5 Rabbit mAb at 1:1000. Secondary antibody: HRP Goat Anti-Rabbit IgG (H+L) at 1:5000. Lysates/proteins: 30ug per lane. Blocking buffer: 5% non-fat dry milk in TBST. Detection: ECL Enhanced Kit. Exposure time: 120s.

## 实验步骤

访问官网浏览详情: [www.ablybio.cn](http://www.ablybio.cn)