

Eph receptor B1 Rabbit mAb

货号: **AYM31163**

产品信息

反应	Human,Mouse,Rat
宿主	Rabbit
克隆性	Monoclonal
预测反应	
应用	WB IP
推荐浓度	WB: 1:500 - 1:2000 IP: 1:20 - 1:50
理论分子量	26kDa/61kDa/109kDa
实测分子量	120kDa
形式	Liquid
保存条件	Store at -20°C. Avoid freeze / thaw cycles. Buffer: PBS with 0.75% BSA,50% glycerol,pH7.3.
偶联物	Unconjugated
阳性对照	Mouse kidney
细胞定位	Cell membrane,Cell projection,Early endosome membrane,Single-pass type I membrane protein,dendrite
纯化	Affinity purification

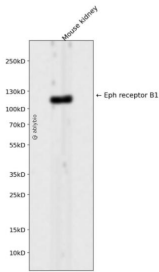
抗原信息

抗原信息	Recombinant fusion protein corresponding to Human Eph receptor B1.
序列	EPENSVACKACPAGTFKASQEAEGCSHCPSNSRSPAEASPICTCRTGGYRADFDPPPEVACTSVPSGPRNVISIVNETSIILEW HPPRETGGRRDDVTYNIICKKCRADRRSCSRCDNVEFVPRQLGLTECRVSISSLWAHTPYTFDIQAINGVSSKSPFPQHV SVNITTNQAAPSTVPIMHQVSATMRSITLSWPQPEQPNGIILDYEIRYYEKEHNEFNSSMARSQTNTARIDGLRPGM

靶点信息

研究背景	Ephrin receptors and their ligands, the ephrins, mediate numerous developmental processes, particularly in the nervous system. Based on their structures and sequence relationships, ephrins are divided into the ephrin-A (EFNA) class, which are anchored to the membrane by a glycosylphosphatidylinositol linkage, and the ephrin-B (EFNB) class, which are transmembrane proteins. The Eph family of receptors are divided into 2 groups based on the similarity of their extracellular domain sequences and their affinities for binding ephrin-A and ephrin-B ligands. Ephrin receptors make up the largest subgroup of the receptor tyrosine kinase (RTK) family. The protein encoded by this gene is a receptor for ephrin-B family members.
基因ID	2047
基因名	EPHB1
Swiss	P54762
别名	EPHB1;ELK;EPHT2;Hek6;NET

产品验证



Western blot analysis of Eph receptor B1 expressed in Mouse kidney using Eph receptor B1 Rabbit mAb at 1:1000. Secondary antibody: HRP Goat Anti-Rabbit IgG (H+L) at 1:5000. Lysates/proteins: 30ug per lane. Blocking buffer: 5% non-fat dry milk in TBST. Detection: ECL Enhanced Kit. Exposure time: 120s.

实验步骤

访问官网浏览详情: www.ablybio.cn