

# CD168 Rabbit mAb

货号: **AYM31157**

## 产品信息

反应	Human,Mouse,Rat
宿主	Rabbit
克隆性	Monoclonal
预测反应	
应用	WB IHC IP
推荐浓度	<b>WB:</b> 1:500 - 1:2000 <b>IHC:</b> 1:50 - 1:200 <b>IP:</b> 1:20 - 1:50
理论分子量	85kDa
实测分子量	84kDa
形式	Liquid
保存条件	Store at -20°C. Avoid freeze / thaw cycles. Buffer: PBS with 0.75% BSA,50% glycerol,pH7.3.
偶联物	Unconjugated
阳性对照	HeLa,K-562
细胞定位	Cell surface,Cytoplasm
纯化	Affinity purification

## 抗原信息

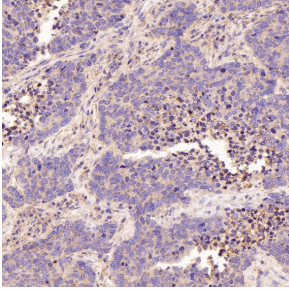
抗原信息	Recombinant fusion protein corresponding to Human CD168.
序列	MSFPKAPLKRFDPSGCAPSPGAYDVKTLEVLKGPVSFQKSQRFKQKESKQNLNVDKDITLPASARKVKSSSESQKNDKDLKILEKEIRVLLQERGA

## 靶点信息

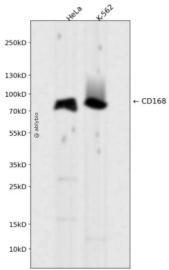
研究背景	The protein encoded by this gene is involved in cell motility. It is expressed in breast tissue and together with other proteins, it forms a complex with BRCA1 and BRCA2, thus is potentially associated with higher risk of breast cancer. Alternatively spliced transcript variants encoding different isoforms have been noted for this gene. [provided by RefSeq, Dec 2008]
基因ID	3161

基因名	HMMR
Swiss	O75330
别名	CD168; IHABP; RHAMM

## 产品验证



Immunohistochemical analysis of paraffin-embedded Human lung large cell cancer, using the antibody at 1:50 dilution.



Western blot analysis of CD168 expressed in HeLa, K-562 using CD168 Rabbit mAb at 1:1000. Secondary antibody: HRP Goat Anti-Rabbit IgG (H+L) at 1:5000. Lysates/proteins: 30ug per lane. Blocking buffer: 5% non-fat dry milk in TBST. Detection: ECL Enhanced Kit. Exposure time: 120s

## 实验步骤

访问官网浏览详情: [www.ablybio.cn](http://www.ablybio.cn)