

# PSMA Rabbit mAb

货号: **AYM31152**

## 产品信息

|       |   |
|-------|---|
| 反应    | Human   |
| 宿主    | Rabbit  |
| 克隆性   | Monoclonal  |
| 预测反应  |   |
| 应用    | WB IHC IP   |
| 推荐浓度  | <b>WB:</b> 1:500 - 1:2000<br><b>IHC:</b> 1:50 - 1:200<br><b>IP:</b> 1:20 - 1:50               |
| 理论分子量 | 9kDa/12kDa/50kDa/78kDa/80kDa/82kDa/84kDa  |
| 实测分子量 | 110kDa  |
| 形式    | Liquid  |
| 保存条件  | Store at -20°C. Avoid freeze / thaw cycles.<br>Buffer: PBS with 0.75% BSA,50% glycerol,pH7.3. |
| 偶联物   | Unconjugated  |
| 阳性对照  | LNCaP,DU145,Mouse kidney,Rat kidney   |
| 细胞定位  | Cell membrane,Cytoplasm,Single-pass type II membrane protein                                  |
| 纯化    | Affinity purification   |

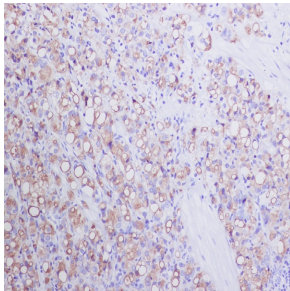
## 抗原信息

|      |  |
|------|--|
| 抗原信息 | Recombinant fusion protein corresponding to Human PSMA.  |
| 序列   | TNITPKHNMKAFLDELKAENIKKFLYNFTQIPHLAGTEQNFQLAKQIQSQWKEFGLDSVELAHYDVLLSYPNKTHPNYISIINE<br>DGNEIFNTSLFEP PPPG |

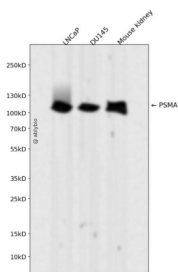
## 靶点信息

|       |  |
|-------|--|
| 研究背景  | This gene encodes a type II transmembrane glycoprotein belonging to the M28 peptidase family. The protein acts as a glutamate carboxypeptidase on different alternative substrates, including the nutrient folate and the neuropeptide N-acetyl-l-aspartyl-l-glutamate and is expressed in a number of tissues such as prostate, central and peripheral nervous system and kidney. A mutation in this gene may be associated with impaired intestinal absorption of dietary folates, resulting in low blood folate levels and consequent hyperhomocysteinemia. Expression of this protein in the brain may be involved in a number of pathological conditions associated with glutamate excitotoxicity. In the prostate the protein is up-regulated in cancerous cells and is used as an effective diagnostic and prognostic indicator of prostate cancer. This gene likely arose from a duplication event of a nearby chromosomal region. Alternative splicing gives rise to multiple transcript variants encoding several different isoforms. [provided by RefSeq, Jul 2010] |
| 基因ID  | 2346   |
| 基因名   | FOLH1  |
| Swiss | Q04609   |
| 别名    | FGCP;FOLH;GCP2;GCPII;NAALAD1;NAALAdase;PSM;PSMA;mGCP;FOLH1   |

## 产品验证



Immunohistochemical analysis of paraffin-embedded human prostate carcinoma, using PSMA Antibody.



Western blot analysis of PSMA expressed in LNCaP, DU145, Mouse kidney using PSMA Rabbit mAb at 1:1000. Secondary antibody: HRP Goat Anti-Rabbit IgG (H+L) at 1:5000. Lysates/proteins: 30ug per lane. Blocking buffer: 5% non-fat dry milk in TBST. Detection: ECL Enhanced Kit. Exposure time: 120s.

## 实验步骤

访问官网浏览详情: [www.ablybio.cn](http://www.ablybio.cn)