

Lin28B Rabbit mAb

货号: **AYM31148**

产品信息

反应	Human
宿主	Rabbit
克隆性	Monoclonal
预测反应	
应用	WB IF/ICC IP FC
推荐浓度	WB: 1:500 - 1:2000 IF/ICC: 1:50 - 1:200 IP: 1:20 - 1:50 FC: 1:20 - 1:50
理论分子量	19kDa/27kDa
实测分子量	32kDa
形式	Liquid
保存条件	Store at -20°C. Avoid freeze / thaw cycles. Buffer: PBS with 0.75% BSA, 50% glycerol, pH7.3.
偶联物	Unconjugated
阳性对照	Mouse liver
细胞定位	Cytoplasm, Nucleus, nucleolus
纯化	Affinity purification

抗原信息

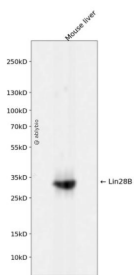
抗原信息	Recombinant fusion protein corresponding to Human Lin28B.
序列	VANCPHKNVAQPASSQGRQEAESQPCTSTLPREVGGGGHCTSPFPQEARAEISERSGRSPQEASSTKSSIAPEEQSKK GPSVQKRKKT

靶点信息

研究背景	The protein encoded by this gene belongs to the lin-28 family, which is characterized by the presence of a cold-shock domain and a pair of CCHC zinc finger domains. This gene is highly expressed in testis, fetal liver, placenta, and in primary human tumors and cancer cell lines. It is negatively regulated by microRNAs that target sites in the 3' UTR, and overexpression of this gene in primary tumors is linked to the repression of let-7 family of microRNAs and derepression of let-7 targets, which facilitates cellular transformation.
------	---

基因ID	389421
基因名	LIN28B
Swiss	Q6ZN17
别名	LIN28B;CSDD2

产品验证



Western blot analysis of Lin28B expressed in Mouse liver using Lin28B Rabbit mAb at 1:1000. Secondary antibody: HRP Goat Anti-Rabbit IgG (H+L) at 1:5000. Lysates/proteins: 30ug per lane. Blocking buffer: 5% non-fat dry milk in TBST. Detection: ECL Enhanced Kit. Exposure time: 120s.

实验步骤

访问官网浏览详情: www.ablybio.cn