

Superoxide Dismutase 3 Rabbit mAb

货号: **AYM31145**

产品信息

反应	Human
宿主	Rabbit
克隆性	Monoclonal
预测反应	
应用	WB IHC
推荐浓度	WB: 1:500 - 1:2000 IHC: 1:50 - 1:200
理论分子量	25kDa
实测分子量	26kDa
形式	Liquid
保存条件	Store at -20°C. Avoid freeze / thaw cycles. Buffer: PBS with 0.75% BSA,50% glycerol,pH7.3.
偶联物	Unconjugated
阳性对照	22Rv1,HL-60,Mouse kidney,Mouse lung
细胞定位	Secreted,extracellular space
纯化	Affinity purification

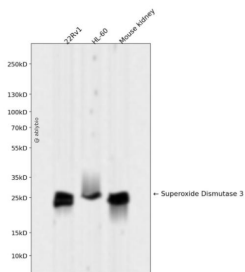
抗原信息

抗原信息	Recombinant fusion protein corresponding to Human Superoxide Dismutase 3.
序列	MLALLCSCLLLAAGASDAWTGEDSAEPNSDSA EWIRDMYAKVTEIWQEVMQRRDDDGALHAACQVQPSATLDAAQPRV TGVVLFRLAPRAKLDAFFALE

靶点信息

研究背景	This gene encodes a member of the superoxide dismutase (SOD) protein family. SODs are antioxidant enzymes that catalyze the conversion of superoxide radicals into hydrogen peroxide and oxygen, which may protect the brain, lungs, and other tissues from oxidative stress. Proteolytic processing of the encoded protein results in the formation of two distinct homotetramers that differ in their ability to interact with the extracellular matrix (ECM). Homotetramers consisting of the intact protein, or type C subunit, exhibit high affinity for heparin and are anchored to the ECM. Homotetramers consisting of a proteolytically cleaved form of the protein, or type A subunit, exhibit low affinity for heparin and do not interact with the ECM. A mutation in this gene may be associated with increased heart disease risk.
基因ID	6649
基因名	SOD3
Swiss	P08294
别名	SOD3;EC-SOD

产品验证



Western blot analysis of Superoxide Dismutase 3 expressed in 22Rv1,HL-60,Mouse kidney using Superoxide Dismutase 3 Rabbit mAb at 1:1000. Secondary antibody: HRP Goat Anti-Rabbit IgG (H+L) at 1:5000. Lysates/proteins: 30ug per lane. Blocking buffer: 5% non-fat dry milk in TBST. Detection: ECL Enhanced Kit. Exposure time: 120s.

实验步骤

访问官网浏览详情: www.ablybio.cn