

# WIPI1 Rabbit mAb

货号: **AYM31139**

## 产品信息

反应	Human,Mouse,Rat
宿主	Rabbit
克隆性	Monoclonal
预测反应	
应用	WB IHC
推荐浓度	<b>WB:</b> 1:500 - 1:2000 <b>IHC:</b> 1:50 - 1:200
理论分子量	48kDa
实测分子量	48kDa
形式	Liquid
保存条件	Store at -20°C. Avoid freeze / thaw cycles. Buffer: PBS with 0.75% BSA,50% glycerol,pH7.3.
偶联物	Unconjugated
阳性对照	SW480,BxPC-3,Mouse eye,Rat brain,Rat eye
细胞定位	Cytoplasm,Cytoplasmic vesicle,Endosome,Golgi apparatus,Peripheral membrane protein,Preautophagosomal structure membrane,clathrin-coated vesicle,cytoskeleton,trans-Golgi network
纯化	Affinity purification

## 抗原信息

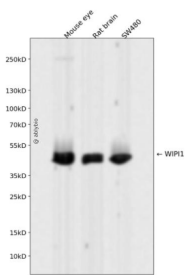
抗原信息	Recombinant fusion protein corresponding to Human WIPI1.
序列	GTLAAITFNASGSKLASASEKGTIVRVFVSPDGQKLYEFRGMKRYVTISLVFSMDSQFLCASSNTETVHIFKLEQVTNSR PEEPSTWSGYMGKMFMAATNYLPTQVSDMMHQDRAFATARLNFSGQRNICTLSTIQKLPRLLVASSSGHLYMYNLDPQD GGECVLIKTHSLLGSGTTEENKENDLRPSLPQSYAATVARPSASSASTVPGYSEDGGALRGEVIPEHEFATGVPVCLDDENE FPPIILCRGNQKGKTKQS

## 靶点信息

研究背景	This gene encodes a WD40 repeat protein. Members of the WD40 repeat family are key components of many essential biologic functions. They regulate the assembly of multiprotein complexes by presenting a beta-propeller platform for simultaneous and reversible protein-protein interactions. Members of the WIPI subfamily of WD40 repeat proteins have a 7-bladed propeller structure and contain a conserved motif for interaction with phospholipids. Alternative splicing results in multiple transcript variants.
------	--

基因ID	55062
基因名	WIPI1
Swiss	Q5MNZ9
别名	WIPI1;ATG18;ATG18A;WIPI49

## 产品验证



Western blot analysis of WIPI1 expressed in Mouse eye,Rat brain,SW480 using WIPI1 Rabbit mAb at 1:1 000. Secondary antibody: HRP Goat Anti-Rabbit IgG (H+L) at 1:5000. Lysates/proteins: 30ug per lane. Blocking buffer: 5% non-fat dry milk in TBST. Detection: ECL Enhanced Kit. Exposure time: 120s.

## 实验步骤

访问官网浏览详情: [www.ablybio.cn](http://www.ablybio.cn)