

Wnt16 Rabbit mAb

货号: **AYM31135**

产品信息

| | |
|-------|---|
| 反应 | Human,Mouse,Rat |
| 宿主 | Rabbit |
| 克隆性 | Monoclonal |
| 预测反应 | |
| 应用 | WB |
| 推荐浓度 | WB: 1:500 - 1:2000 |
| 理论分子量 | |
| 实测分子量 | 41kDa |
| 形式 | Liquid |
| 保存条件 | Store at -20°C. Avoid freeze / thaw cycles. Buffer: PBS with 0.75% BSA,50% glycerol,pH7.3. |
| 偶联物 | Unconjugated |
| 阳性对照 | Raji,293T,U-937,Mouse kidney,Rat brain |
| 细胞定位 | cytoplasm,extracellular region,extracellular space |
| 纯化 | Affinity purification |

抗原信息

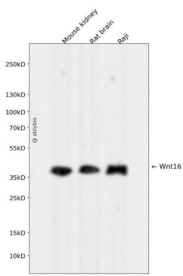
| | |
|------|---|
| 抗原信息 | Recombinant fusion protein corresponding to Human Wnt16. |
| 序列 | MDRAALLGLARLCLWAALLVLFYGAQGNWMWLGIAISFGVPEKLGCANLPLNSRQKELCKRKPYPYLLPSIREGARLGIQEC GSQFRHERWNCMITAAATT |

靶点信息

| | |
|------|---|
| 研究背景 | The WNT gene family consists of structurally related genes which encode secreted signaling proteins. The se proteins have been implicated in oncogenesis and in several developmental processes, including regulation of cell fate and patterning during embryogenesis. This gene is a member of the WNT gene family. It contains two transcript variants diverging at the 5' termini. These two variants are proposed to be the products of separate promoters and not to be splice variants from a single promoter. They are differentially expressed in normal tissues, one of which (variant 2) is expressed at significant levels only in the pancreas, whereas another one (variant 1) is expressed more ubiquitously with highest levels in adult kidney, placenta, brain, heart, and spleen. [provided by RefSeq, Jul 2008] |
|------|---|

| | |
|-------|--------|
| 基因ID | 51384 |
| 基因名 | WNT16 |
| Swiss | Q9UBV4 |
| 别名 | |

产品验证



Western blot analysis of Wnt16 expressed in Mouse kidney,Rat brain,Raji using Wnt16 Rabbit mAb at 1:1000. Secondary antibody: HRP Goat Anti-Rabbit IgG (H+L) at 1:5000. Lysates/proteins: 30ug per lane. Blocking buffer: 5% non-fat dry milk in TBST. Detection: ECL Enhanced Kit. Exposure time: 120s.

实验步骤

访问官网浏览详情: www.ablybio.cn