

# Glucocorticoid Receptor Rabbit mAb

货号: **AYM31124**

## 产品信息

反应	Human,Mouse,Rat
宿主	Rabbit
克隆性	Monoclonal
预测反应	
应用	WB FC
推荐浓度	<b>WB:</b> 1:500 - 1:2000 <b>FC:</b> 1:20 - 1:50
理论分子量	49-85kDa
实测分子量	95kDa
形式	Liquid
保存条件	Store at -20°C. Avoid freeze / thaw cycles. Buffer: PBS with 0.75% BSA,50% glycerol,pH7.3.
偶联物	Unconjugated
阳性对照	HeLa,HepG2
细胞定位	Cytoplasm,Mitochondrion,Nucleus,Nucleus
纯化	Affinity purification

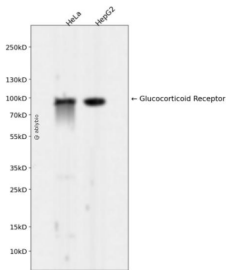
## 抗原信息

抗原信息	Recombinant fusion protein corresponding to Human Glucocorticoid Receptor.
序列	MDSKESLTPGREENPSSVLAQERGDVMDFYKTLRGGATVKVSASSPSLAVASQSDSKQRRLLVDFPKGSVSNAQQPDLS KAVSLSMGLYMGETETKVMGNDLGFPQQGQISLSSGETDLKLEESIANLNRSTSVPENPKSSASTAVSAAPTEKEFPKTH SDVSSEQHLKGTGTNGGNVKLYTTDQSTFDILQDLEFSSGSPGKETNESPWRSDLLIDENCLLSPLAGEDDSFLLEGN SNEDCKPLILPDTKPKIKDNGDLVLSSPSNVTLQPVKTEK

## 靶点信息

研究背景	This gene encodes glucocorticoid receptor, which can function both as a transcription factor that binds to glucocorticoid response elements in the promoters of glucocorticoid responsive genes to activate their transcription, and as a regulator of other transcription factors. This receptor is typically found in the cytoplasm, but upon ligand binding, is transported into the nucleus. It is involved in inflammatory responses, cellular proliferation, and differentiation in target tissues. Mutations in this gene are associated with generalized glucocorticoid resistance. Alternative splicing of this gene results in transcript variants encoding either the same or different isoforms. Additional isoforms resulting from the use of alternate in-frame translation initiation sites have also been described, and shown to be functional, displaying diverse cytoplasm-to-nucleus trafficking patterns and distinct transcriptional activities (PMID:15866175).
基因ID	2908
基因名	NR3C1
Swiss	P04150
别名	GCCR;GCR;GCRST;GR;GRL;NR3C1

## 产品验证



Western blot analysis of Glucocorticoid Receptor expressed in HeLa,HepG2 using Glucocorticoid Receptor Rabbit mAb at 1:1000. Secondary antibody: HRP Goat Anti-Rabbit IgG (H+L) at 1:5000. Lysates/proteins: 30ug per lane. Blocking buffer: 5% non-fat dry milk in TBST. Detection: ECL Enhanced Kit. Exposure time: 120s.

## 实验步骤

访问官网浏览详情: [www.ablybio.cn](http://www.ablybio.cn)