

NDUFC2 Rabbit mAb

货号: **AYM31123**

产品信息

反应	Human
宿主	Rabbit
克隆性	Monoclonal
预测反应	
应用	WB IHC
推荐浓度	WB: 1:500 - 1:2000 IHC: 1:50 - 1:200
理论分子量	10kDa/11kDa/13kDa/14kDa
实测分子量	12kDa
形式	Liquid
保存条件	Store at -20°C. Avoid freeze / thaw cycles. Buffer: PBS with 0.75% BSA,50% glycerol,pH7.3.
偶联物	Unconjugated
阳性对照	293T,OVCAR3,HeLa,A-549,mouse stomach,mouse brain,mouse heart,rat kidney
细胞定位	Matrix side,Mitochondrion inner membrane,Single-pass membrane protein
纯化	Affinity purification

抗原信息

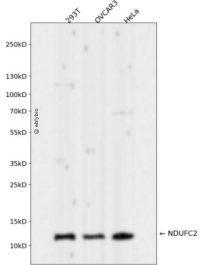
抗原信息	Recombinant fusion protein corresponding to Human NDUFC2.
序列	MIARRNPEPLRFLPDEARSLPPPKLTDPRLLYIGFLGYCSGLIDNLI RRRPIATAGLHRQLLYITAFFFAGYYLVKREDYLYAVRD REMFGYMKLHPEDF

靶点信息

研究背景	Accessory subunit of the mitochondrial membrane respiratory chain NADH dehydrogenase (Complex I, th at is believed not to be involved in catalysis. Complex I functions in the transfer of electrons from NADH t o the respiratory chain. The immediate electron acceptor for the enzyme is believed to be ubiquinone.
基因ID	4718

基因名	NDUFC2
Swiss	O95298
别名	NDUFC2;B14.5b;CI-B14.5b;HLC-1;NADHDH2

产品验证



Western blot analysis of NDUFC2 expressed in 293T, OVCAR3, HeLa using NDUFC2 Rabbit mAb at 1:1000. Secondary antibody: HRP Goat Anti-Rabbit IgG (H+L) at 1:5000. Lysates/proteins: 30ug per lane. Blocking buffer: 5% non-fat dry milk in TBST. Detection: ECL Enhanced Kit. Exposure time: 120s.

实验步骤

访问官网浏览详情: www.ablybio.cn