

# LRRK2 Rabbit mAb

货号: **AYM31108**

## 产品信息

反应	Human,Mouse,Rat
宿主	Rabbit
克隆性	Monoclonal
预测反应	
应用	WB IHC IF/ICC IP
推荐浓度	<b>WB:</b> 1:500 - 1:2000 <b>IHC:</b> 1:50 - 1:200 <b>IF/ICC:</b> 1:50 - 1:200 <b>IP:</b> 1:20 - 1:50
理论分子量	286kDa
实测分子量	280kDa
形式	Liquid
保存条件	Store at -20°C. Avoid freeze / thaw cycles. Buffer: PBS with 0.75% BSA,50% glycerol,pH7.3.
偶联物	Unconjugated
阳性对照	Rat lung
细胞定位	Cell projection,Cytoplasm,Cytoplasmic side,Cytoplasmic vesicle,Endoplasmic reticulum,Endosome,Golgi apparatus,Lysosome,Membrane,Mitochondrion,Mitochondrion inner membrane,Mitochondrion matrix,Mitochondrion outer membrane,Perikaryon,Peripheral membrane protein,axon,dendrite,secretory vesicle,synaptic vesicle membrane
纯化	Affinity purification

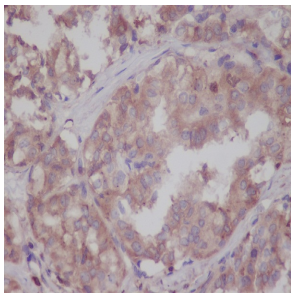
## 抗原信息

抗原信息	Recombinant fusion protein corresponding to Human LRRK2 .
序列	EKESSPKLVELLLNSGSREQDVRKALTISIGKGDSQIISLLLRRLALDVANNSICLGGFCIGKVEPSWLGPPLFPDKTSNLRKQ TNIASLARMVIRYQMKSAVEEGTAGSGDGNFSEDVLSKFDEWTFIPDSSMDSVFAQSDDL DSEGSEGSFLVKKKSNS

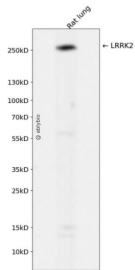
## 靶点信息

研究背景	This gene is a member of the leucine-rich repeat kinase family and encodes a protein with an ankryin repeat region, a leucine-rich repeat (LRR) domain, a kinase domain, a DFG-like motif, a RAS domain, a GTPase domain, a MLK-like domain, and a WD40 domain. The protein is present largely in the cytoplasm but also associates with the mitochondrial outer membrane. Mutations in this gene have been associated with Parkinson disease-8.
基因ID	120892
基因名	LRRK2
Swiss	Q5S007
别名	LRRK2;AURA17;DARDARIN;PARK8;RIPK7;ROCO2

## 产品验证



Immunohistochemical analysis of paraffin-embedded human thyroid, using LRRK2 Antibody.



Western blot analysis of LRRK2 expressed in Rat lung using LRRK2 Rabbit mAb at 1:1000. Secondary antibody: HRP Goat Anti-Rabbit IgG (H+L) at 1:5000. Lysates/proteins: 30ug per lane. Blocking buffer: 5% non-fat dry milk in TBST. Detection: ECL Enhanced Kit. Exposure time: 120s.

## 实验步骤

访问官网浏览详情: [www.ablybio.cn](http://www.ablybio.cn)