

# CHD1L Rabbit mAb

货号: **AYM31107**

## 产品信息

反应	Human,Mouse
宿主	Rabbit
克隆性	Monoclonal
预测反应	
应用	WB IHC IF/ICC IP FC
推荐浓度	<b>WB:</b> 1:500 - 1:2000 <b>IHC:</b> 1:50 - 1:200 <b>IF/ICC:</b> 1:50 - 1:200 <b>IP:</b> 1:20 - 1:50 <b>FC:</b> 1:20 - 1:50
理论分子量	69kDa/77kDa/88kDa/90kDa/100kDa
实测分子量	101kDa
形式	Liquid
保存条件	Store at -20°C. Avoid freeze / thaw cycles. Buffer: PBS with 0.75% BSA,50% glycerol,pH7.3.
偶联物	Unconjugated
阳性对照	Mouse kidney,Mouse liver
细胞定位	Nucleus
纯化	Affinity purification

## 抗原信息

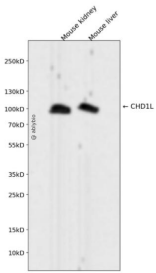
抗原信息	Recombinant fusion protein corresponding to Human CHD1L.
序列	KLLASEGSTMDEIDLESILGETKDGQWVSDALPAAEGGSRDQEEGKNHMYLFEGKDYSKEPSKEDRKSFEQLVNLQKTLL EKASQEGRSLRNKGSVLIPGLVEGSTRKRKRVLSPEELEDRQKKRQEAANKRRRLIEKKRQKEEAHKKKMAWWESNNYQ SFCLPSESEPEDLENGEESAELDYQDPDATSLKYVSGDVTHPQAGAEDALIVHCVDDSGHWGRGGLFTALEKRSAEP RKIYELAGKMKD

## 靶点信息

研究背景	This gene encodes a DNA helicase protein involved in DNA repair. The protein converts ATP to add poly(A DP-ribose) as it regulates chromatin relaxation following DNA damage. Several alternatively spliced transcripts variants have been described for this gene.
------	---

基因ID	9557
基因名	CHD1L
Swiss	Q86WJ1
别名	CHD1L;ALC1;CHDL

## 产品验证



Western blot analysis of CHD1L expressed in Mouse kidney, Mouse liver using CHD1L Rabbit mAb at 1:1000. Secondary antibody: HRP Goat Anti-Rabbit IgG (H+L) at 1:5000. Lysates/proteins: 30ug per lane. Blocking buffer: 5% non-fat dry milk in TBST. Detection: ECL Enhanced Kit. Exposure time: 120s.

## 实验步骤

访问官网浏览详情: [www.ablybio.cn](http://www.ablybio.cn)