

Tropomyosin 1 Rabbit mAb

货号: **AYM31104**

产品信息

反应	Human,Mouse,Rat
宿主	Rabbit
克隆性	Monoclonal
预测反应	
应用	WB IHC IF/ICC IP FC
推荐浓度	WB: 1:500 - 1:2000 IHC: 1:50 - 1:200 IF/ICC: 1:50 - 1:200 IP: 1:20 - 1:50 FC: 1:20 - 1:50
理论分子量	26kDa/28kDa/32kDa
实测分子量	33kDa
形式	Liquid
保存条件	Store at -20°C. Avoid freeze / thaw cycles. Buffer: PBS with 0.75% BSA,50% glycerol,pH7.3.
偶联物	Unconjugated
阳性对照	A-549,BT-474,THP-1,DU145,SW480,MCF7,Mouse heart,Mouse skeletal muscle,Mouse brain
细胞定位	Cytoplasm,cytoskeleton
纯化	Affinity purification

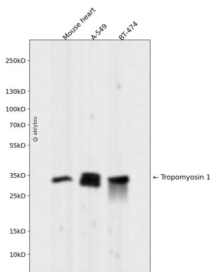
抗原信息

抗原信息	Recombinant fusion protein corresponding to Human Tropomyosin 1.
序列	MAGSSSLEAVRRKIRSLQEADAAEERAGTLQRELDHERKLRKRETAADVASLNRRRIQLVEEELDRAQERLATALQKLEEAEK AADESERGMKVIESRAQKDEEKMEIQEIQLKEAKHIAEDADRKYEEVARKLVIIESDLERAEEERAEELSEGKCAELEEELKTVTN NLKSLEAQAEKYSQKEDRYEEIEIKVLSDKLKEAETRAEFAERSVTKLEKSIDDLEDQLYQQLEQNRRLTNELKLALNED

靶点信息

研究背景	This gene is a member of the tropomyosin family of highly conserved, widely distributed actin-binding proteins involved in the contractile system of striated and smooth muscles and the cytoskeleton of non-muscle cells. Tropomyosin is composed of two alpha-helical chains arranged as a coiled-coil. It is polymerized end to end along the two grooves of actin filaments and provides stability to the filaments. The encoded protein is one type of alpha helical chain that forms the predominant tropomyosin of striated muscle, where it also functions in association with the troponin complex to regulate the calcium-dependent interaction of actin and myosin during muscle contraction. In smooth muscle and non-muscle cells, alternatively spliced transcript variants encoding a range of isoforms have been described. Mutations in this gene are associated with type 3 familial hypertrophic cardiomyopathy.
基因ID	7168
基因名	TPM1
Swiss	P09493
别名	TPM1;C15orf13;CMD1Y;CMH3;HEL-S-265;HTM-alpha;LVNC9;TMSA

产品验证



Western blot analysis of Tropomyosin 1 expressed in Mouse heart, A-549, BT-724 using Tropomyosin 1 Rabbit mAb at 1:1000. Secondary antibody: HRP Goat Anti-Rabbit IgG (H+L) at 1:5000. Lysates/proteins: 30ug per lane. Blocking buffer: 5% non-fat dry milk in TBST. Detection: ECL Enhanced Kit. Exposure time: 120s.

实验步骤

访问官网浏览详情: www.ablybio.cn