

Insulin Rabbit mAb

货号: **AYM31091**

产品信息

反应	Human,Mouse,Rat
宿主	Rabbit
克隆性	Monoclonal
预测反应	
应用	IHC IF/ICC
推荐浓度	IHC: 1:50 - 1:200 IF/ICC: 1:50 - 1:200
理论分子量	11kDa/21kDa
实测分子量	7kDa
形式	Liquid
保存条件	Store at -20°C. Avoid freeze / thaw cycles. Buffer: PBS with 0.75% BSA,50% glycerol,pH7.3.
偶联物	Unconjugated
阳性对照	Mouse pancreas,Rat pancreas
细胞定位	Secreted
纯化	Affinity purification

抗原信息

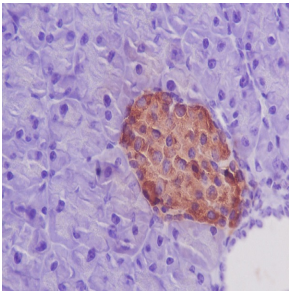
抗原信息	Recombinant fusion protein corresponding to Human Insulin.
序列	FVNQHLCGSHLVEALYLVCGERGFFYTPKTRREAEDLQVQVELGGGPGAGSLQPLALEGSLQKRGIVEQCCTSICSLYQLENYCN

靶点信息

研究背景	After removal of the precursor signal peptide, proinsulin is post-translationally cleaved into three peptide s: the B chain and A chain peptides, which are covalently linked via two disulfide bonds to form insulin, and C-peptide. Binding of insulin to the insulin receptor (INSR) stimulates glucose uptake. A multitude of mutant alleles with phenotypic effects have been identified. There is a read-through gene, INS-IGF2, which overlaps with this gene at the 5' region and with the IGF2 gene at the 3' region. Alternative splicing results in multiple transcript variants.
------	--

基因ID	3630
基因名	INS
Swiss	P01308
别名	IDDM;IDDM1;IDDM2;ILPR;IRDN;MODY10;INS;Insulin;insulin

产品验证



Immunohistochemical analysis of paraffin-embedded mouse pancreas, using Insulin Antibody.

实验步骤

访问官网浏览详情: www.ablybio.cn