

PCB Rabbit mAb

货号: **AYM31089**

产品信息

反应	Human,Mouse,Rat
宿主	Rabbit
克隆性	Monoclonal
预测反应	
应用	WB IF/ICC
推荐浓度	WB: 1:500 - 1:2000 IF/ICC: 1:50 - 1:200
理论分子量	57kDa/129kDa
实测分子量	130kDa
形式	Liquid
保存条件	Store at -20°C. Avoid freeze / thaw cycles. Buffer: PBS with 0.75% BSA,50% glycerol,pH7.3.
偶联物	Unconjugated
阳性对照	HepG2,HeLa
细胞定位	Mitochondrion matrix
纯化	Affinity purification

抗原信息

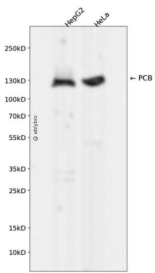
抗原信息	Recombinant fusion protein corresponding to Human PCB.
序列	HSMGLGSKFKEVKKAYVEANQMLGLIKVTPSSKIVGDLAQFMVQNGLSRAEAEAEELSFPFRSVVEFLQGYIGVPHGG FPEPFRSKVLKDLPRVEGRPGASLPLDLQALEKELVDRHGEEVTPEDVLSAAMYPDVFAHFKDFTATFGPLDSLNTLFL QGPKIAEEFEVELERGKTLHIKALAVSDLNRAGQRQVFFELNGQLRSILVKDTQAMKEMHFHPKALKDVKGQIGAPMPGK VIDIKVVAGAKVAKGQPLCVLSAMKMETVVTSPMEGTVRKVHVTKDMTLEGDDLILEIE

靶点信息

研究背景	This gene encodes pyruvate carboxylase, which requires biotin and ATP to catalyse the carboxylation of pyruvate to oxaloacetate. The active enzyme is a homotetramer arranged in a tetrahedron which is located exclusively in the mitochondrial matrix. Pyruvate carboxylase is involved in gluconeogenesis, lipogenesis, insulin secretion and synthesis of the neurotransmitter glutamate. Mutations in this gene have been associated with pyruvate carboxylase deficiency. Alternatively spliced transcript variants with different 5' UTRs, but encoding the same protein, have been found for this gene.
------	---

基因ID	5091
基因名	PC
Swiss	P11498
别名	PC;PCB

产品验证



实验步骤

访问官网浏览详情: www.ablybio.cn