

GLUT1 Rabbit mAb

货号: **AYM31086**

产品信息

| | |
|-------|---|
| 反应 | Human,Mouse,Rat |
| 宿主 | Rabbit |
| 克隆性 | Monoclonal |
| 预测反应 | |
| 应用 | WB IHC ICC FC |
| 推荐浓度 | WB: 1:500 - 1:2000 IHC: 1:50 - 1:200 ICC: 1:50 - 1:200 FC: 1:20 - 1:50 |
| 理论分子量 | 54kDa |
| 实测分子量 | 54kDa |
| 形式 | Liquid |
| 保存条件 | Store at -20°C. Avoid freeze / thaw cycles. Buffer: PBS with 0.75% BSA,50% glycerol,pH7.3. |
| 偶联物 | Unconjugated |
| 阳性对照 | HepG2 |
| 细胞定位 | Cell membrane,Melanosome,Multi-pass membrane protein |
| 纯化 | Affinity purification |

抗原信息

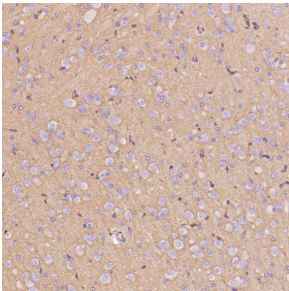
| | |
|------|--|
| 抗原信息 | Recombinant fusion protein corresponding to Human GLUT1. |
| 序列 | RPAAIAVAGFSNWTSNFIVGMCQYVEQLCGPYVFIIFTVLLVLFIFTYFKVPETKGRTFDEIASGFRQGGASQSDKTPPEEL FHPLGADSQV |

靶点信息

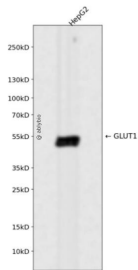
| | |
|------|--|
| 研究背景 | This gene encodes a major glucose transporter in the mammalian blood-brain barrier. The encoded protein is found primarily in the cell membrane and on the cell surface, where it can also function as a receptor for human T-cell leukemia virus (HTLV) I and II. Mutations in this gene have been found in a family with paroxysmal exertion-induced dyskinesia. |
|------|--|

| | |
|-------|--|
| 基因ID | 6513 |
| 基因名 | SLC2A1 |
| Swiss | P11166 |
| 别名 | SLC2A1;CSE;DYT17;DYT18;DYT9;EIG12;GLUT;GLUT-1;GLUT1;GLUT1DS;HTLVR;PED;SDCHCN |

产品验证



Immunohistochemical analysis of paraffin-embedded Rat hippocampus , using the Antibody at 1:300 dilution.



Western blot analysis of GLUT1 expressed in HepG2 using GLUT1 Rabbit mAb at 1:1000. Secondary antibody: HRP Goat Anti-Rabbit IgG (H+L) at 1:5000. Lysates/proteins: 30ug per lane. Blocking buffer: 5% non-fat dry milk in TBST. Detection: ECL Enhanced Kit. Exposure time: 120s

实验步骤

访问官网浏览详情: www.ablybio.cn