

FANCA Rabbit mAb

货号: **AYM31084**

产品信息

反应	Human
宿主	Rabbit
克隆性	Monoclonal
预测反应	
应用	WB IP
推荐浓度	WB: 1:500 - 1:2000 IP: 1:20 - 1:50
理论分子量	32kDa/159kDa/162kDa
实测分子量	163Da
形式	Liquid
保存条件	Store at -20°C. Avoid freeze / thaw cycles. Buffer: PBS with 0.75% BSA,50% glycerol,pH7.3.
偶联物	Unconjugated
阳性对照	HeLa
细胞定位	Cytoplasm,Nucleus
纯化	Affinity purification

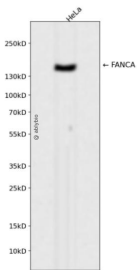
抗原信息

抗原信息	Recombinant fusion protein corresponding to Human FANCA.
序列	MSDSWVPNSASGQDPGRRRAWAELLAGRVKREKYNPERAQKLKESAVRLLRSHQDLNALLEVEGPLCKKLSLSKVID CDSSEAYANHSSFFIGSALQDQASRLGVPVIGLSAGMVASSVGQICTAPAETSHPVLLTVEQRKKLSSLLLEFAQYLLAHSM FSRLSFCQELWKIQSSLLLEAVWHLHVQGIVSLQELLESHPMHAVGSWLFRNLCLCEQMEASCQHADVARAMLSDFV QMFVLRGFQKNSDLRRTVEPEKMPQVTVDVLRMLI

靶点信息

研究背景	The Fanconi anemia complementation group (FANC) currently includes FANCA, FANCB, FANCC, FANCD1 (also called BRCA2), FANCD2, FANCE, FANCF, FANCG, FANCI, FANCI (also called BRIP1), FANCL, FANCM and FANCN (also called PALB2). The previously defined group FANCH is the same as FANCA. Fanconi anemia is a genetically heterogeneous recessive disorder characterized by cytogenetic instability, hypersensitivity to DNA crosslinking agents, increased chromosomal breakage, and defective DNA repair. The members of the Fanconi anemia complementation group do not share sequence similarity; they are related by their assembly into a common nuclear protein complex. This gene encodes the protein for complementation group A. Alternative splicing results in multiple transcript variants encoding different isoforms. Mutations in this gene are the most common cause of Fanconi anemia.
基因ID	2175
基因名	FANCA
Swiss	O15360
别名	FANCA;FA;FA-H;FA1;FAA;FACA;FAH;FANCH

产品验证



Western blot analysis of FANCA expressed in HeLa using FANCA Rabbit mAb at 1:1000. Secondary antibody: HRP Goat Anti-Rabbit IgG (H+L) at 1:5000. Lysates/proteins: 30ug per lane. Blocking buffer: 5% non-fat dry milk in TBST. Detection: ECL Enhanced Kit. Exposure time: 120s.

实验步骤

访问官网浏览详情: www.ablybio.cn