

Emerin Rabbit mAb

货号: **AYM31078**

产品信息

反应	Human,Mouse,Rat
宿主	Rabbit
克隆性	Monoclonal
预测反应	
应用	WB IHC IF/ICC
推荐浓度	WB: 1:500 - 1:2000 IHC: 1:50 - 1:200 IF/ICC: 1:50 - 1:200
理论分子量	29kDa
实测分子量	29kDa
形式	Liquid
保存条件	Store at -20°C. Avoid freeze / thaw cycles. Buffer: PBS with 0.75% BSA,50% glycerol,pH7.3.
偶联物	Unconjugated
阳性对照	THP-1,Mouse brain,Rat lung
细胞定位	Nucleoplasmic side,Nucleus inner membrane,Nucleus outer membrane,Single-pass membrane protein
纯化	Affinity purification

抗原信息

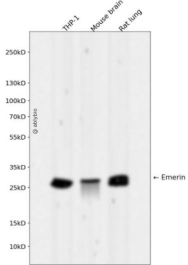
抗原信息	Recombinant fusion protein corresponding to Human Emerin.
序列	RERPMYGRDSAYQSITHYRPVSASRSSLDSLSSSTFSMSSSSSSSWLTRRAIRPENRAPGAGLGQDRQVPLWGQL LLFLVFVIVLFFIYHFMQAEENPF

靶点信息

研究背景	Emerin is a serine-rich nuclear membrane protein and a member of the nuclear lamina-associated protein family. It mediates membrane anchorage to the cytoskeleton. Drefuss-Emery muscular dystrophy is an X-linked inherited degenerative myopathy resulting from mutation in the emerin gene. [provided by RefSeq, Jul 2008]
基因ID	2010

基因名	EMD
Swiss	P50402
别名	EDMD; LEMD5; STA

产品验证



Western blot analysis of Emerin expressed in THP-1, Mouse brain, Rat lung using Emerin Rabbit mAb at 1:1000. Secondary antibody: HRP Goat Anti-Rabbit IgG (H+L) at 1:5000. Lysates/proteins: 30ug per lane. Blocking buffer: 5% non-fat dry milk in TBST. Detection: ECL Enhanced Kit. Exposure time: 120s.

实验步骤

访问官网浏览详情: www.ablybio.cn