

PPM1G Rabbit mAb

货号: **AYM31075**

产品信息

反应	Human,Rat
宿主	Rabbit
克隆性	Monoclonal
预测反应	
应用	WB IHC IF/ICC FC
推荐浓度	WB: 1:500 - 1:2000 IHC: 1:50 - 1:200 IF/ICC: 1:50 - 1:200 FC: 1:20 - 1:50
理论分子量	59kDa
实测分子量	75kDa
形式	Liquid
保存条件	Store at -20°C. Avoid freeze / thaw cycles. Buffer: PBS with 0.75% BSA,50% glycerol,pH7.3.
偶联物	Unconjugated
阳性对照	A-549,PC-3,Mouse testis,Rat testis,Mouse kidney,Rat kidney
细胞定位	Cytoplasm,Lipid-anchor,Membrane
纯化	Affinity purification

抗原信息

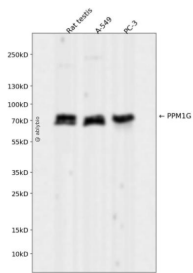
抗原信息	Recombinant fusion protein corresponding to Human PPM1G.
序列	AEEDDEEEEEEMVPGMEGKEEPGSDSGTTAVVALIRGKQLIVANAGDSRCVSEAGKALDMSYDHPKPEDEVELARIKNA GGKVTMDGRVNGGLNLSRAIGDHFYKRKNLPPPEEQMISALPDIKVLTLDHDFMVIACDGIWNVMSSQ

靶点信息

研究背景	The protein encoded by this gene is a member of the PP2C family of Ser/Thr protein phosphatases. PP2C family members are known to be negative regulators of cell stress response pathways. This phosphatase is found to be responsible for the dephosphorylation of Pre-mRNA splicing factors, which is important for the formation of functional spliceosome. Studies of a similar gene in mice suggested a role of this phosphatase in regulating cell cycle progression.
------	---

基因ID	5496
基因名	PPM1G
Swiss	O15355
别名	PPM1G;PP2CG;PP2CGAMMA;PPP2CG

产品验证



Western blot analysis of PPM1G expressed in Rat testis,A-549,PC-3 using PPM1G Rabbit mAb at 1:1000. Secondary antibody: HRP Goat Anti-Rabbit IgG (H+L) at 1:5000. Lysates/proteins: 30ug per lane. Blocking buffer: 5% non-fat dry milk in TBST. Detection: ECL Enhanced Kit. Exposure time: 120s.

实验步骤

访问官网浏览详情: www.ablybio.cn