

CD166 Rabbit mAb

货号: **AYM31069**

产品信息

反应	Human,Mouse,Rat
宿主	Rabbit
克隆性	Monoclonal
预测反应	
应用	WB IHC IF/ICC IP FC
推荐浓度	WB: 1:500 - 1:2000 IHC: 1:50 - 1:200 IF/ICC: 1:50 - 1:200 IP: 1:20 - 1:50 FC: 1:20 - 1:50
理论分子量	15kDa/33kDa/63kDa/65kDa
实测分子量	100kDa
形式	Liquid
保存条件	Store at -20°C. Avoid freeze / thaw cycles. Buffer: PBS with 0.75% BSA,50% glycerol,pH7.3.
偶联物	Unconjugated
阳性对照	HepG2,A375,U-87MG,A-549,BT-474,Mouse liver
细胞定位	Membrane,Secreted,Single-pass type I membrane protein
纯化	Affinity purification

抗原信息

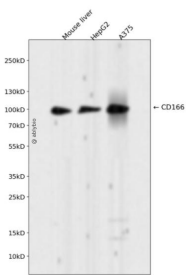
抗原信息	Recombinant fusion protein corresponding to Human CD166.
序列	WYTVNSAYGDTIIIPCRLDVQPQLMFGKWKYEKPDGSPVFIAFRSSTKKSQYDDVPEYKDRNLNLSNYTLNISNARISDEKRFVCMMLVTEDNVFEAPTIVKVKQPSKPEIVSKALFLETEQLKKGDCISEDSYPDGNITWYRNGKVLHPL

靶点信息

研究背景	This gene encodes activated leukocyte cell adhesion molecule (ALCAM), also known as CD166 (cluster of differentiation 166), which is a member of a subfamily of immunoglobulin receptors with five immunoglobulin-like domains (VVC2C2C2) in the extracellular domain. This protein binds to T-cell differentiation antigen CD6, and is implicated in the processes of cell adhesion and migration. Multiple alternatively spliced transcript variants encoding different isoforms have been found.
------	---

基因ID	214
基因名	ALCAM
Swiss	Q13740
别名	ALCAM;CD166;MEMD

产品验证



Western blot analysis of CD166 expressed in Mouse liver, HepG2, A375 using CD166 Rabbit mAb at 1:10 00. Secondary antibody: HRP Goat Anti-Rabbit IgG (H+L) at 1:5000. Lysates/proteins: 30ug per lane. Blocking buffer: 5% non-fat dry milk in TBST. Detection: ECL Enhanced Kit. Exposure time: 120s.

实验步骤

访问官网浏览详情: www.ablybio.cn